



20 SENTINEL LANDSCAPES 25 ACCOMPLISHMENTS REPORT

SENTINELLANDSCAPES.ORG



TABLE OF CONTENTS

Executive Summary	1
Building Resilient Landscapes to Strengthen Mission Readiness: FY 2024 Highlights	2
Figure 1: 19 Sentinel Landscapes Locations.....	2
Figure 2: Landscape Profiles	2
Federal Agency Support: Cost Sharing to Support Military Readiness and Land Protection.....	5
Figure 3: Funding Committed to Sentinel Landscapes Through FY 2024.....	5
Figure 4: Investments Through FY 2024	6
Department of War	7
Department of the Interior	8
U.S. Department of Agriculture.....	9
Furthering the Federal Coordinating Committee’s Mission-Essential Work	10

EXECUTIVE SUMMARY

In 2013, the Department of War (DoW), the U.S. Department of Agriculture (USDA), and the Department of the Interior (DOI) established the Sentinel Landscapes Partnership to address shared priorities in the areas surrounding military installations and ranges. Authorized by 10 U.S. Code §2693, the Sentinel Landscapes Partnership is a coalition of Federal agencies, state and local governments, and private organizations that work with willing landowners and land managers to advance mutually beneficial land use goals that support military readiness within sentinel landscapes.

Sentinel landscapes are defined as places where preserving the working and rural character of private and public lands is important for both national defense and conservation priorities. These landscapes were identified as critical locations where military readiness, working lands, and natural resource conservation interests overlap. The DoW, USDA, and DOI designed the partnership to strengthen landowner support, enhance interagency coordination, and ensure the long-term sustainability of mission-compatible land use.

SENTINEL LANDSCAPES



The Sentinel Landscapes Partnership's mission is to:

- ▶ Strengthen military readiness
- ▶ Support agricultural productivity
- ▶ Preserve natural resources
- ▶ Increase access to recreation
- ▶ Advance sustainable land management
- ▶ Promote landscape resilience

Sentinel landscapes are locally led partnerships anchored by at least one military installation or range. They encompass high-priority lands that hold significant value for DoW, USDA, and DOI's training, testing, working lands, and conservation missions. These landscapes typically include open space, agricultural and forestry lands, rangeland, and recreational areas, each selected at an appropriate scale to address ecological restoration, resilience, and installation-buffering needs.

The Sentinel Landscapes Partnership is coordinated at the national level by the Federal Coordinating Committee (FCC), which carries out the authorities granted by the National Defense Authorization Act (NDAA). The FCC comprises representatives from the USDA Natural Resources Conservation Service and U.S. Forest Service, the DoW Readiness and Environmental Protection Integration (REPI) Program, and the DOI U.S. Fish and Wildlife Service.

Through this collaboration, the agencies aligned voluntary landowner assistance programs, ranging from conservation easements to resource stewardship incentives, to provide more strategic and efficient support. While each program maintains its own scope and mission focus, including those directly tied to the training and operational needs of the anchor installation, the coordinated approach allows the agencies to reduce duplicative efforts, address internal resource constraints, and advance complementary conservation and resilience objectives that help protect long-term military readiness.

Today, the partnership spans 19 designated landscapes across 17 states and one insular territory, encompassing more than 60 military installations and ranges. The 2025 Sentinel Landscapes Accomplishments Report highlights the partnership's role in safeguarding military installations and ranges from encroachment, strengthening resource-sharing across partners, and protecting landscapes for the dual-benefit of realistic training and landscape conservation that are essential for long-term mission sustainment.

BUILDING RESILIENT LANDSCAPES TO STRENGTHEN MISSION READINESS: FY 2024 HIGHLIGHTS

Figure 1 illustrates the landscape locations across the partnership, demonstrating its broad geographic reach and its capacity to adapt to military and conservation needs across a wide range of landscapes and environments. The goals and objectives of individual sentinel landscapes are established by local partnerships that may include Federal, state, and local government agencies, tribal governments, private organizations, and academic institutions that represent relevant working lands, conservation, recreation, and landowner interests. Figure 2 provides more details on individual landscape goals, highlighting acres protected and enrolled alongside additional success in FY 2024.

Figure 1: 19 Sentinel Landscapes Locations

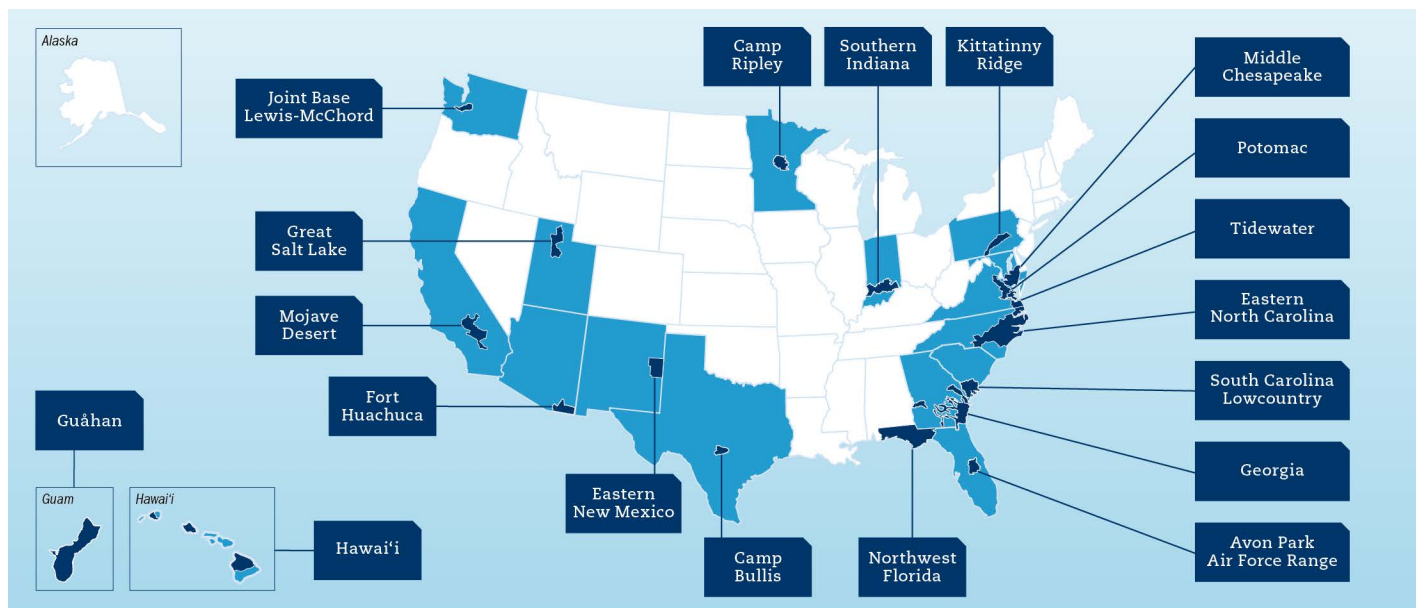


Figure 2: Landscape Profiles

Avon Park Air Force Range

Florida | Established 2016
Total Protected Acres from 2016 through 2024: 123,802
Total Enrolled Acres in 2024: 92,807

Camp Bullis

Texas | Established 2022
Total Protected Acres from 2022 through 2024: 3,971
Total Enrolled Acres in 2024: 18,321

Camp Ripley

Minnesota | Established 2015
Total Protected Acres from 2015 through 2024: 26,499
Total Enrolled Acres in 2024: 9,735

Eastern New Mexico

New Mexico | Established 2024
Acres Protected: N/A*
Acres Enrolled (During FY24): N/A*

* Data collection begins in FY25



Eastern North Carolina



North Carolina | Established 2016

Total Protected Acres from 2016 through 2024: 235,870

Total Enrolled Acres in 2024: 298,043

Fort Huachuca



Arizona | Established 2015

Total Protected Acres from 2015 through 2023: 73,551

Total Enrolled Acres in 2023: 999,930

Georgia



Georgia | Established 2018

Total Protected Acres from 2018 through 2024: 228,592

Total Enrolled Acres in 2024: 76,315

Great Salt Lake

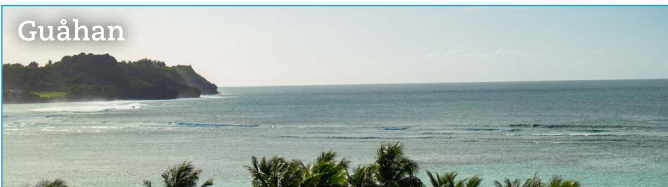


Utah | Established 2024

Acres Protected: N/A*

Acres Enrolled (During FY24): N/A*

Guåhan



Guam | Established 2025

Acres Protected: N/A*

Acres Enrolled (During FY24): N/A*

Hawai'i



Hawai'i | Established 2024

Acres Protected: N/A*

Acres Enrolled (During FY24): N/A*

Joint Base Lewis McChord

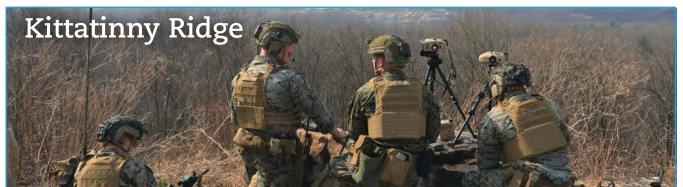


Washington | Established 2013

Total Protected Acres from 2013 through 2022: 22,098

Total Enrolled Acres in 2022: 363

Kittatinny Ridge



Pennsylvania | Established 2024

Acres Protected: N/A*

Acres Enrolled (During FY24): N/A*

Middle Chesapeake



Maryland | Established 2015

Total Protected Acres from 2015 through 2024: 70,991

Total Enrolled Acres in 2024: 27,998

Mojave Desert

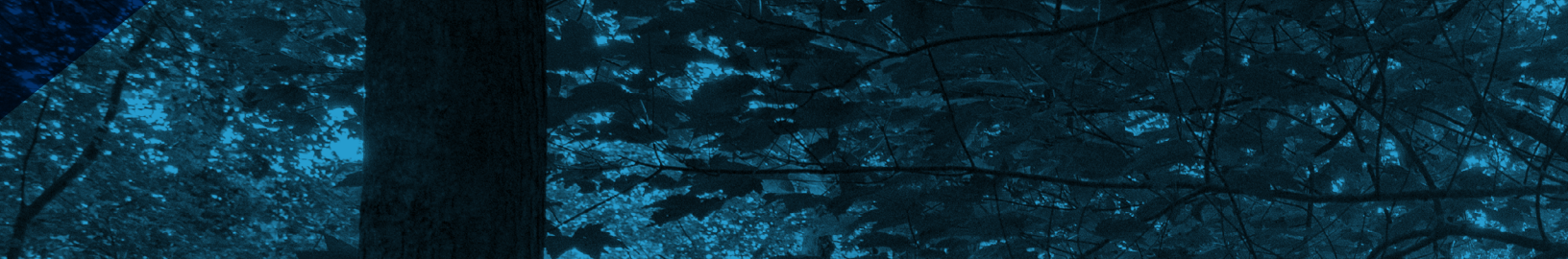


California | Established 2024

Acres Protected: N/A*

Acres Enrolled (During FY24): N/A*

* Data collection begins in FY25



Northwest Florida

Florida | Established 2022

Total Protected Acres from 2022 through 2024: 56,679

Total Enrolled Acres in 2024: 100,851



Potomac

Virginia | Established 2023

Total Protected Acres from 2023 through 2024: N/A*

Total Enrolled Acres in 2024: 48,662

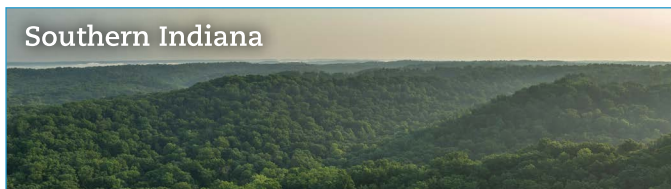


South Carolina Lowcountry

South Carolina | Established 2023

Total Protected Acres from 2023 through 2024: 31,314

Total Enrolled Acres in 2024: 50,363



Southern Indiana

Indiana | Established 2022

Total Protected Acres from 2022 through 2024: 2,783

Total Enrolled Acres in 2024: 40,710



Tidewater

Virginia | Established 2023

Total Protected Acres from 2023 through 2024: 79

Total Enrolled Acres in 2024: 4,680

* Data collection begins in FY25



(Photo by Wildpath)

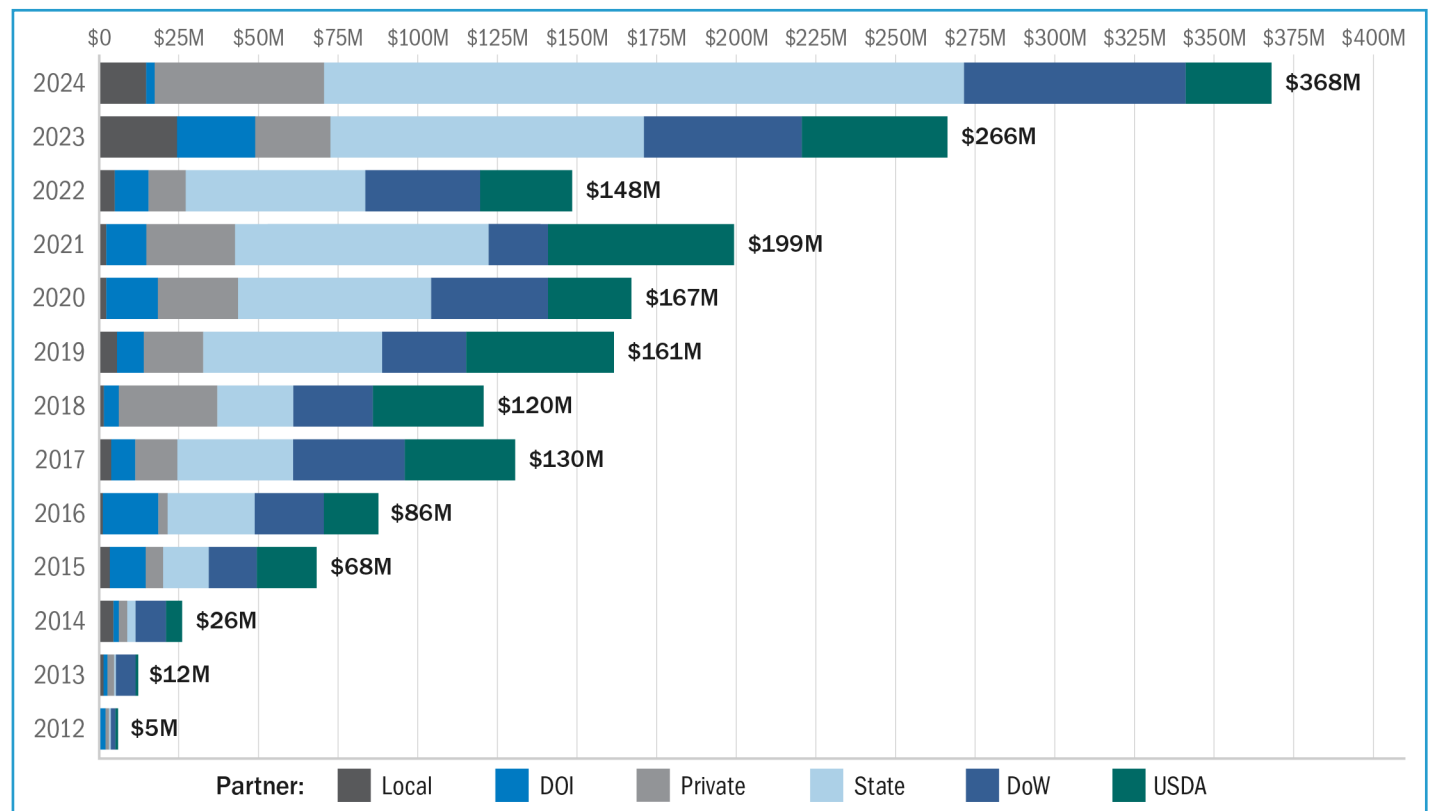
FEDERAL AGENCY SUPPORT: COST SHARING TO SUPPORT MILITARY READINESS AND LAND PROTECTION



Through FY 2024, projects in sentinel landscapes received over \$1.75 billion in funding, with \$368 million committed in FY 2024 alone. The partnership also saw a 125,000-acre increase in protected acres, bringing the total number of acres permanently protected to 876,230 acres. In FY 2024, more than 1.6 million acres were enrolled in financial and technical assistance programs that support sustainable land-management practices. These increases illustrate the sustained growth of the Sentinel Landscapes Partnership’s impact. Together, these results show how coordinated investments are strengthening landscape resilience, supporting working lands, and protecting the training and testing missions of military installations.

Figure 3 represents the funding contributions of sentinel landscape partners each year. These contributions illustrate how the cooperation established through the Sentinel Landscapes Partnership enables the dollars spent by each agency partner to go further toward achieving their goals within the sentinel landscapes.

Figure 3: Funding Committed to Sentinel Landscapes Through FY 2024 in Millions

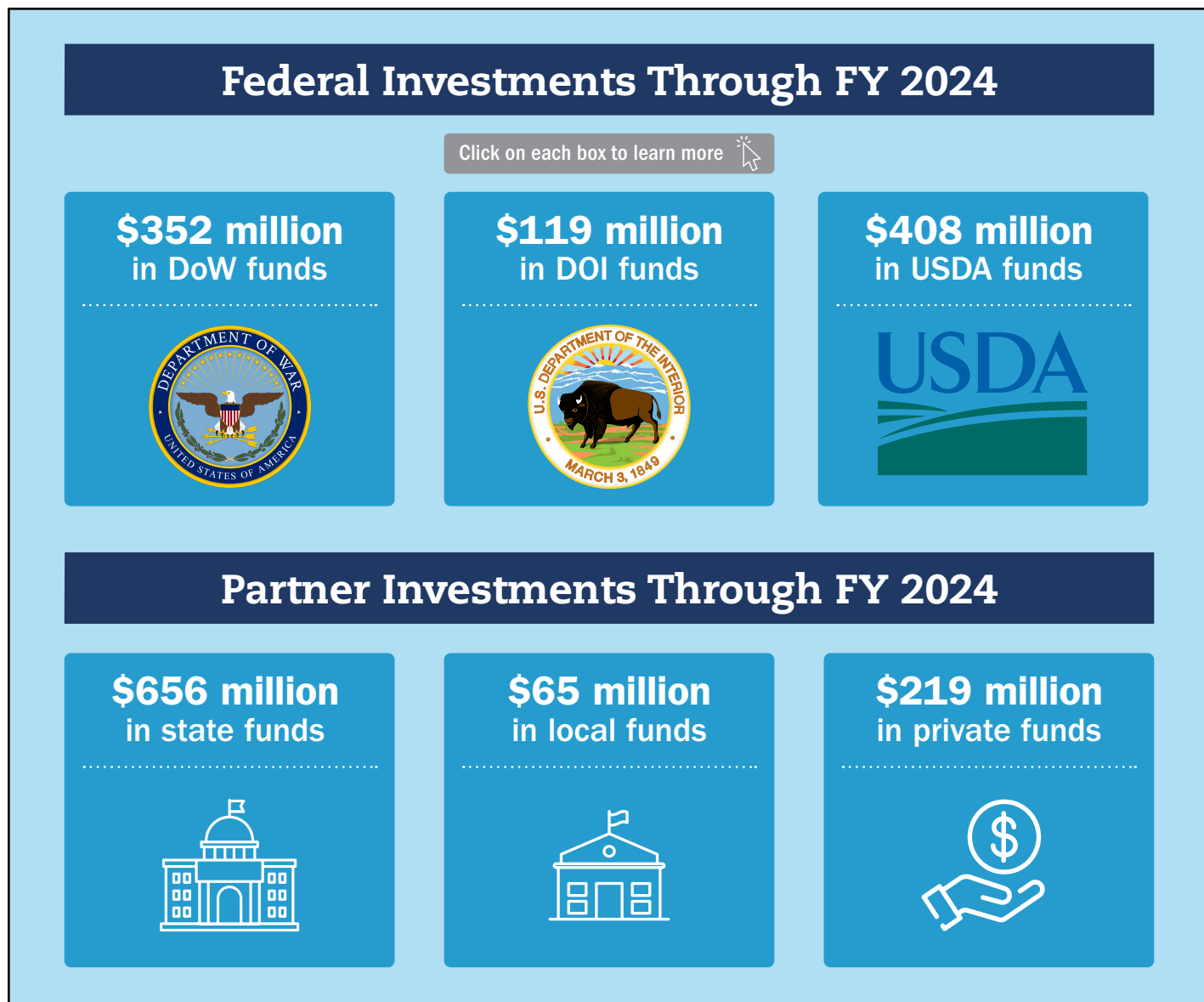


Partner	FY 2012	FY 2013	FY 2014	FY 2015	FY 2016	FY 2017	FY 2018	FY 2019	FY 2020	FY 2021	FY 2022	FY 2023	FY 2024	TOTAL
DOI	\$1.5M	\$1.3M	\$1.6M	\$11.3M	\$17.0M	\$7.5M	\$4.7M	\$8.4M	\$16.1M	\$12.4M	\$10.5M	\$24.4M	\$2.8M	\$119.5M
DoW	\$1.5M	\$6.5M	\$9.6M	\$15.0M	\$21.7M	\$35.3M	\$25.0M	\$26.6M	\$37.2M	\$18.6M	\$36.2M	\$49.6M	\$69.6M	\$352.3M
Local	\$0.1M	\$1.0M	\$4.2M	\$2.8M	\$0.7M	\$3.4M	\$1.1M	\$5.2M	\$1.7M	\$1.9M	\$4.6M	\$24.1M	\$14.3M	\$64.9M
Private	\$1.2M	\$1.9M	\$2.7M	\$5.6M	\$3.1M	\$13.3M	\$30.9M	\$18.7M	\$25.4M	\$27.8M	\$11.9M	\$23.9M	\$53.3M	\$219.9M
State	\$0.6M	\$0.4M	\$2.6M	\$14.4M	\$26.8M	\$36.2M	\$23.7M	\$56.2M	\$60.5M	\$79.8M	\$56.0M	\$98.3M	\$200.6M	\$656.0M
USDA	\$0.6M	\$0.5M	\$4.8M	\$18.9M	\$16.5M	\$34.5M	\$34.8M	\$46.0M	\$25.7M	\$58.3M	\$28.8M	\$45.6M	\$27.1M	\$408.3M
TOTAL	\$5.4M	\$11.7M	\$25.5M	\$68.0M	\$85.7M	\$130.2M	\$120.2M	\$161.1M	\$166.6M	\$198.8M	\$148.0M	\$265.9M	\$367.7M	\$1.75B



Through collaborative efforts, DoW, USDA, and DOI achieved significant success in 2025. Participation in the Sentinel Landscapes Partnership enables FCC member agencies to align and achieve shared objectives through coordinated efforts. Central to this success is the partnership's ability to contribute to each agency's distinct mission. Figure 4 demonstrates how this coordinated, agency-specific alignment amplifies outcomes across defense readiness, conservation, and working lands at a national scale. By leveraging strategic investments, projects are designed to address multiple agency priorities simultaneously, resulting in landscape-scale outcomes that individual agencies could not accomplish alone. These collaborative initiatives also deliver tangible benefits to farmers, ranchers, and forest managers by expanding access to financial and technical assistance programs. These resources support land stewardship, strengthen rural economies, and enhance the long-term resilience of agricultural communities while also helping safeguard the training and testing missions that depend on these landscapes.

Figure 4: Investments Through FY 2024





OVERVIEW

To sustain critical military missions, the DoW looks beyond the fence line and depends on collaboration outside the installation boundaries. The DoW relies on expansive, undeveloped natural landscapes to conduct live-fire training, weapons testing, and other mission-essential operations. Increasing commercial and residential development near military installations brings light pollution, airspace limitations, and noise interference that can compromise readiness. These encroachment threats weaken landscape resilience to drought, wildfire, and other environmental threats, placing personnel, infrastructure, and equipment at greater risk.

To counter these challenges, DoW plays a crucial role in the Sentinel Landscapes Partnership by collaborating with interagency partners to promote sustainable land-use practices at key sites near military installations. By coordinating investments and aligning goals, the partnership protects the military mission, preserves working lands, and enhances installation resilience to deliver greater mission benefits while relying on fewer DoW resources. Through locally driven collaboration, sentinel landscapes enable the DoW to meet mission requirements while conserving open space and reducing additional Federal funding. Sentinel landscapes demonstrate what is possible when agencies and partners unite around shared military goals and land stewardship values. Minimizing impacts to training areas and mission facilities is key to ensuring the DoW can conduct realistic testing and training for warfighters. For the DoW, this is not just land conservation. It is mission assurance.

60 Military Installations Missions Protected

[Click to learn more about installations](#)

[Click here for DoW installation funding data](#)

FY24 funding reflects DOW investments between October 1, 2023, and September 30, 2024.

Mission Impact at Avon Park Air Force Range Sentinel Landscape

MISSIONS PROTECTED:



Flight and Weapons Training



Ground Maneuver



Habitat Preservation



Comprehensive Unmanned Aircraft Systems Training

Incompatible land use from residential development has already caused permanent training impacts at the Avon Park Air Force Range, including having to fly at higher minimum altitudes. From FY 2011 through FY 2024, the installation received nearly \$29 million in REPI funding to reduce incompatible development and avoid regulatory restrictions from endangered species seeking shelter on the installation. By preserving over 18,000 acres of land outside the installation, the Air Force and REPI Program ensure mission security for the 5th and 6th generation aircraft and weapons systems.



U.S. Air Force Airmen assigned to the 820th Base Defense Group defend the perimeter during Exercise Global Eagle at Avon Park Air Force Range, Florida. (U.S. Air Force photo by Staff Sgt. Jessi Roth)



OVERVIEW

The Sentinel Landscapes Partnership helps U.S. Fish and Wildlife Service (USFWS), a bureau within the DOI, advance its mission of working with others to conserve, protect, and enhance fish, wildlife, plants, and their habitats for the continuing benefit of the American People. These landscapes offer a collaborative platform where USFWS joins other Federal agencies, tribal nations, state governments, and private landowners to implement conservation strategies at a meaningful, landscape-wide scale. By focusing efforts around military installations and training areas, the partnership supports the protection and restoration of critical ecosystems, helping USFWS achieve recovery goals, connect fragmented habitats, and strengthen ecological resilience for both wildlife and surrounding communities.



FY24 funding reflects DOI investments between October 1, 2023, and September 30, 2024.

DOI Success at Camp Ripley Sentinel Landscape

MISSIONS PROTECTED:



Endangered Plant and Animal Species



Land Protection



Outdoor Recreation



Warfighter Training

The Readiness and Recreation Initiative (RARI) combines funding from the DoW REPI Program and the DOI's Land and Water Conservation Fund to expand outdoor recreation opportunities for military families and the public while supporting military readiness. In 2025, \$5 million in funding through RARI was awarded to Camp Ripley and the City of Baxter to protect land for recreation within the Camp Ripley buffer zone. The City of Baxter will further use this funding to develop 2.5 miles of paved trail and two interpretive trailhead parking areas to improve access to Mississippi Overlook Park. Through their coordination within the Camp Ripley Sentinel Landscape, project partners used RARI funding to provide meaningful recreational benefits for military families while ensuring that land around the installation is maintained in compatible use for military training needs.



Employees of the Camp Ripley Training Center took part in an inaugural Stewardship Day celebration recognizing the achievements of ecological sustainability and the importance of environmental awareness. (Minnesota National Guard Photo by Mr. Tony Housey)

USFWS Success at Hawai'i Sentinel Landscape



In 2025, USFWS supported a Marine Corps Base Hawai'i REPI Challenge project to address the growing threat of anthropogenic light at night (ALAN). Marine Corps Base Hawai'i, located within the Hawai'i Sentinel Landscape, faces increasing challenges to both mission readiness and the protection of endemic seabirds due to increasing light pollution. DoW and USFWS work to maintain healthy seabird populations on and near the installation to avoid impacts to military testing and training activities. This REPI Challenge project builds on a successful collaboration to develop science-based solutions to seabird-lighting conflicts through targeted lighting research. The project will also restore coastal habitats for seabirds and sea turtles in areas affected by ALAN and proactively reduce encroachment pressures on Marine Corps Base Hawai'i by curbing future light pollution that could interfere with nighttime training and testing.



U.S. Marine Corps Lance Cpl. Shrijan Kamar, a rifleman with 3rd Littoral Combat Team, 3rd Marine Littoral Regiment, 3rd Marine Division, fires at targets during squad attack drills on Marine Corps Base Hawai'i. (U.S. Marine Corps photo by Cpl. Iyer Ramakrishna)

OVERVIEW

Through the Sentinel Landscapes Partnership, the Natural Resources Conservation Service (NRCS) and U.S. Forest Service amplify the partnership’s reach and effectiveness by coordinating resources and expertise to address conservation goals and military readiness needs. This collaboration supports agricultural producers, forest landowners, and rural communities by encouraging voluntary stewardship practices that sustain working lands and local economies. By targeting investments in areas where conservation and defense priorities align, USDA agencies maximize the impact of their programs. They protect high-quality soils, improve forest and watershed health, boost natural disaster resilience, and maintain the cultural and economic vitality of rural landscapes across the U.S.



Figures represent cumulative USDA acreage and funding data in sentinel landscapes from FY 2013–FY 2024.

Promoting Long-term Resilience at Fort Huachuca Sentinel Landscape

MISSIONS PROTECTED:



Local Economies



Agriculture



Farmers and Ranchers



Reducing Electromagnetic Interference

As part of the USDA NRCS Regional Conservation Partnership Program (RCP) award to partners within the Fort Huachuca Sentinel Landscape, \$1,250,000 in funding is available to agricultural producers within the sentinel landscape to implement sustainable land management practices including erosion control, native species habitat support, and brush management. These efforts not only strengthen agricultural resilience and conservation outcomes but also support the long-term military mission by maintaining open space, reducing resource conflicts, and preserving the ecological conditions essential to the Fort Huachuca Sentinel Landscape. By leveraging collective resources and collaborating on common goals, RCP demonstrates the power of public-private partnerships in delivering results for agriculture and conservation while reinforcing the mission-compatible land uses needed to sustain Fort Huachuca’s training and testing activities.



A U.S. Army UH-60 Blackhawk crew chief with 10th Combat Aviation Brigade, 10th Mountain Division, assigned to Joint Task Force-Southern Border (JTF-SB), performs after-landing-procedures at Fort Huachuca, Arizona, following a mission with U.S. Customs and Border Protection. (U.S. Army photo by Master Sgt. Alexander Henninger)

FURTHERING THE FCC'S MISSION-ESSENTIAL WORK

In 2025, the Sentinel Landscapes Partnership achieved significant success in advancing its mission to protect vital landscapes that support military readiness at more than 60 military installations. The partnership increased total protected acres by 17 percent and saw a 25 percent increase in funds spent. The progress achieved this year underscores the partnership's dedication to promoting land-use strategies that align with all FCC member agencies. Maintaining national defense capabilities, supporting agricultural sustainability, advancing species conservation, and ensuring responsible land stewardship are just some of the key objectives met. These achievements lay the groundwork for future efforts across the 19 sentinel landscapes, reinforcing a strong path forward in protecting lands and the military mission. Looking ahead, the Sentinel Landscapes Partnership remains committed to advancing conservation, working lands, and national defense goals through collaborative landscape-scale initiatives.

To learn more about the partnership, subscribe to the listserv using the QR code or visit <https://public.govdelivery.com/accounts/USGOVREPI/signup/38552>.



U.S. Soldiers load equipment onto Humvees in preparation for Operation Tiger Dawn at Camp Mackall, North Carolina. The mission-readiness exercise tests logistical precision and coordination, enabling the XVIII Airborne Corps to sustain combat effectiveness and maintain a decisive edge in complex operational environments. (U.S. Army photo by Sgt. Nolan Brewer)

Cover photo credits (clockwise from upper left):

U.S. Marines with 3rd Marine Littoral Regiment, 3rd Marine Division, participate in the Bougainville Run on Marine Corps Base Hawai'i. (U.S. Marine Corps photo by Sgt. Malia Sparks)

A U.S. Air National Guard Airman from the Civil Engineer Squadron, 148th Fighter Wing, builds a structure for the Advanced Explosive Ordnance Disposal Conventional Course, Camp Ripley, Little Falls, Minnesota. (U.S. Air National Guard photo by Staff Sgt. Tylin Rust)

Photo by Wildpath

China Lake, California—An F/A-18F Super Hornet assigned to the "Vampires" of Air Test and Evaluation Squadron Nine (VX-9), and a U-2 Dragonlady fly over Naval Air Weapons Station China Lake. (U.S. Navy photo by Lt. Jonathan Newbery)

U.S. Air Force Airmen assigned to the 822nd Base Defense Squadron stand watch during Exercise IRON SAFESIDE at Moody Air Force Base, Georgia. (U.S. Air Force photo by Senior Airman Leonid Soubbotine)

Soldiers conduct live-fire training with an M1A2 SEPv3 Abrams main battle tank at Camp Ripley Training Center near Little Falls, Minnesota. (Minnesota National Guard photo by Anthony Housey)

Interior photo credits:

Section header images by Wildpath.



2025 SENTINEL LANDSCAPES ACCOMPLISHMENTS REPORT