

# The Georgia Sentinel Landscape

[www.sentinellandscapes.org](http://www.sentinellandscapes.org)

Email:  
**Kenneth Bradley, GSL Coordinator**  
[bradley\\_kenneth@sentinellandscapes.org](mailto:bradley_kenneth@sentinellandscapes.org)  
(662)617-0729



Townsend Bombing Range/Photo Courtesy DOD

## The Georgia Sentinel Landscape

*Protecting lands important to the nation's defense, working lands, and wildlife habitat*



### What is a Sentinel Landscape?

Sentinel Landscapes are working or natural lands important to the Nation's defense that have been officially designated by the U.S. Departments of Agriculture, Defense, and the Interior. This unique partnership brings together federal, state, local, and private stakeholders with overlapping interests in and around military installations and ranges.

### The Georgia Sentinel Landscape

Established in 2017

Over 20 state, local, non-governmental and federal partners

9 military installations: Fort Stewart, Hunter Army Airfield, Moody AFB, Robins AFB, MCLB-Albany, Fort Benning, Fort Gordon, Moody AFB and NSB King's Bay



M1A1 Abram and AH-64 Apache's Fort Stewart, GA/Photo Courtesy DOD

### Mission Statement

The Georgia Sentinel Landscape facilitates voluntary, non-regulatory, strategic, science-based, economically-grounded, common-sense collaborations that enable partners to implement compatible land uses in areas deemed as priorities for the military testing and training mission as well as critical to state and federal conservation efforts



# Georgia

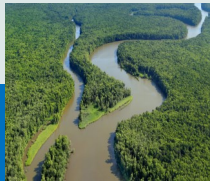
## Sentinel Landscape Goals



Agriculture and Forestry in  
REPI Boundaries



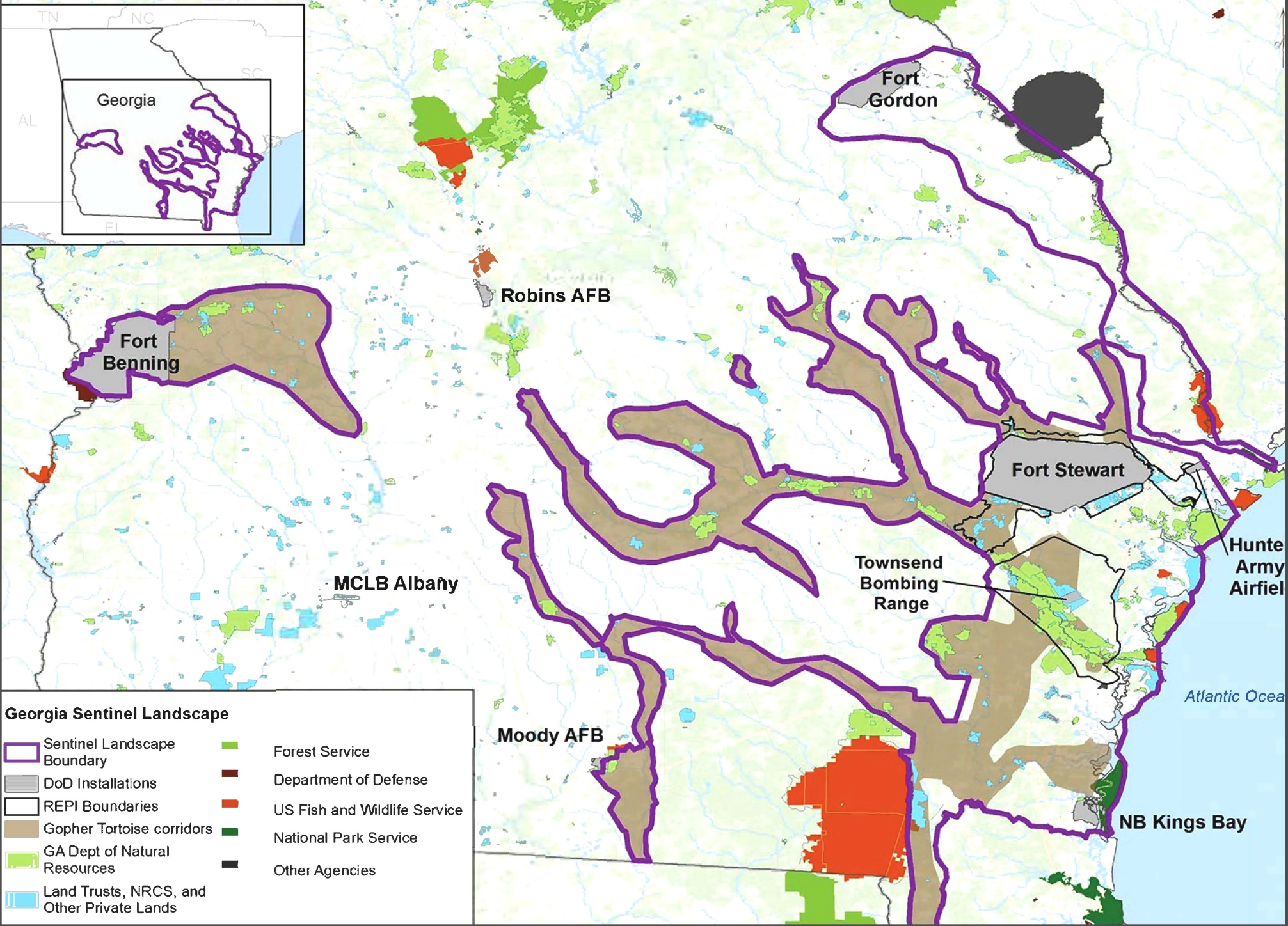
Coastal Resiliency



Savannah River  
Watershed



Gopher Tortoise



Map of the Georgia Sentinel Landscape delineating each of the four focus areas

Goal Photos provided courtesy of Steve Friedman, GA DNR and Randy Tate, Longleaf Alliance