

CAMP BULLIS SENTINEL LANDSCAPE

TEXAS | Est. 2022



The Camp Bullis Sentinel Landscape, based in the Texas Hill Country, encompasses ranch lands, spring-fed rivers, and one of the fastest growing regions in the country. Within this region, Joint Base San Antonio's Camp Bullis provides training opportunities for 266 mission partners, supporting DOD enlisted and officer medical training, military intelligence, special forces, pre-deployment, national, and international training requirements.

With rapid population growth emanating from San Antonio and the I-35 corridor, the Texas Hill Country and Camp Bullis Sentinel Landscape are facing a mounting number of challenges affecting the long-term resilience of the region's natural resources. New development contributes to the loss of agricultural lands and increased ambient light pollution, impacting night-time military training. Growing demands on existing water supply have led to the loss of spring flow and aquifer drawdowns, impacting water supplies for Camp Bullis, rural landowners, towns, and cities.

These and other challenges have attracted a myriad of partners to come together to create a collective vision for how to invest in protecting the natural resources that define the region as it grows. Since forming the Camp Bullis Sentinel Landscape, more than 50 partner organizations have committed to collaborating towards shared goals.



David Sanchez, Air Force Wildland Fire Branch firefighter, along with Joint Base San Antonio's Natural Resources Office, and Fire & Emergency Services conduct a prescribed burn, Jan. 19, 2022, at Joint Base San Antonio-Camp Bullis, Texas. (U.S. Air Force photo by Brian G. Rhodes)

Landscape Goals



Reduce and mitigate encroachment by supporting compatible land uses.



Enhance and sustain installation and community resilience through natural resource stewardship.



Sustain a thoughtful and effective partnership through adaptive management.

LANDSCAPE DETAIL

Total Sentinel Landscape Area: **1,080,221** acres

Total Protected
Acres:
1,127

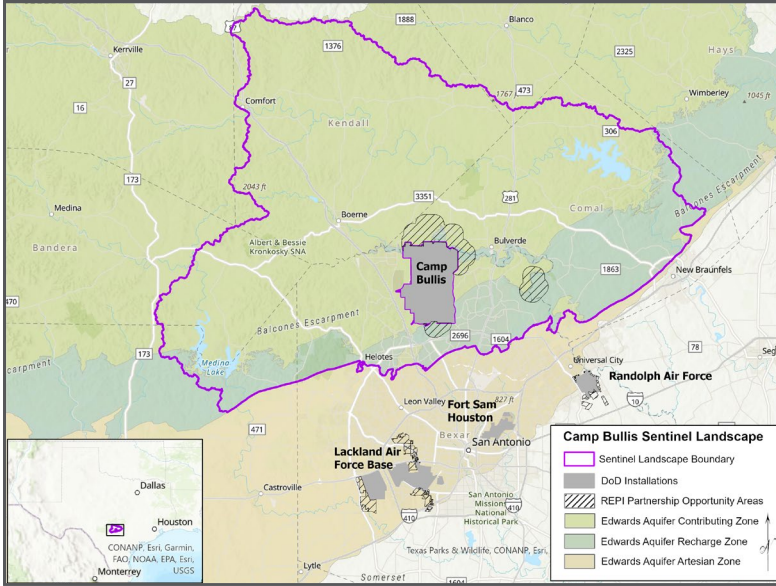
From year established
through fiscal year 2022

Total Enrolled
Acres:
62,000

For fiscal year 2022

Active Base
Area Acres:
28,000

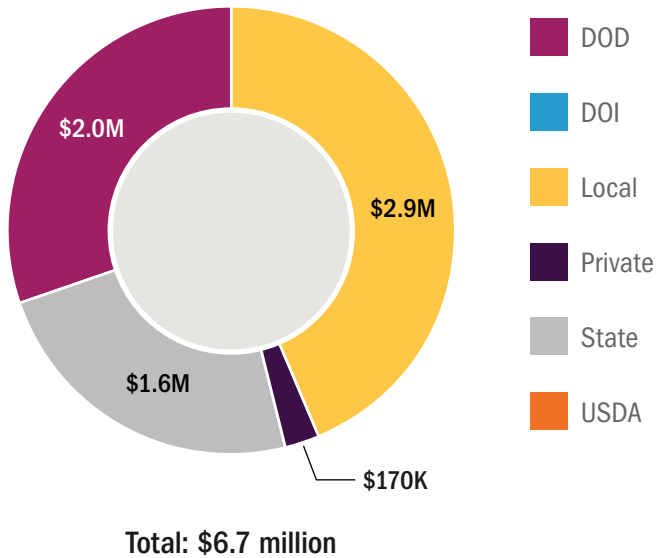
Camp Bullis Sentinel Landscape Map



Key Partners

- ▶ Alamo Area Council of Governments
- ▶ Alamo Resource Conservation & Development Area, Inc.
- ▶ Bandera County River Authority & Groundwater District
- ▶ Bat Conservation International
- ▶ Bexar Audubon Society
- ▶ Camp Stanley
- ▶ Cibolo Center for Conservation
- ▶ Cibolo Conservancy
- ▶ City of San Antonio
- ▶ Comal County Conservation Alliance
- ▶ Comal Country Friends of the Night Skies
- ▶ Compatible Lands Foundation
- ▶ Cow Creek Groundwater Conservation District
- ▶ Edwards Aquifer Authority
- ▶ Edwards Aquifer Conservancy Edwards Aquifer Conservation
- ▶ Federal Emergency Management Agency
- ▶ Great Springs Project
- ▶ Greater Edwards Aquifer Alliance
- ▶ Green Spaces Alliance
- ▶ Guadalupe-Blanco River Trust
- ▶ Headwaters at the Comal
- ▶ Hill Country Alliance
- ▶ International Dark Sky Association – Texas Chapter
- ▶ Joint Base San Antonio
- ▶ Kendall Country Friends of the Night Skies
- ▶ Kendall County Soil & Water Conservation District
- ▶ National Cave and Karst Research Institute
- ▶ Oaks and Prairies Joint Venture
- ▶ San Antonio Board of Realtors
- ▶ San Antonio Chamber of Commerce
- ▶ San Antonio Hispanic Chamber of Commerce
- ▶ San Antonio River Authority
- ▶ Society for Ecological Restoration – Texas Chapter
- ▶ Texas A&M - Forest Service
- ▶ Texas A&M – Natural Resources Institute
- ▶ Texas Agricultural Land Trust
- ▶ Texas Department of Agriculture
- ▶ Texas Division of Emergency Management
- ▶ Texas Military Preparedness Commission
- ▶ Texas Parks and Wildlife Department
- ▶ Texas State Soil & Water Conservation Board
- ▶ Texas State University
- ▶ Texas State University – Meadows Center for Water & the Environment
- ▶ Texas Military Department
- ▶ Texas Wildlife Association
- ▶ The Nature Conservancy
- ▶ Trinity Glen Rose Groundwater Conservation District
- ▶ Trust for Public Land
- ▶ University of Oklahoma – SC CASC
- ▶ University of Texas – San Antonio
- ▶ U.S. Air Force Civil Engineering Center
- ▶ U.S. Army Corps of Engineers
- ▶ U.S. Army Regional Environmental and Energy Office
- ▶ U.S. Department of Agriculture – Natural Resources Conservation Service
- ▶ U.S. Department of Defense
- ▶ U.S. Department of Interior – Fish & Wildlife Service
- ▶ U.S. Department of Interior – National Park Service Rivers, Trails and Conservation Assistance Program
- ▶ U.S. Geological Survey

Camp Bullis Sentinel Landscape Total Funding by Partner



LANDSCAPE COORDINATOR CONTACT: Daniel Oppenheimer | daniel@hillcountryalliance.org