

# GEORGIA SENTINEL LANDSCAPE

Est. 2018



The Georgia Sentinel Landscape is home to several of the nation’s most important military installations and ranges, including Fort Moore, Fort Stewart, Hunter Army Airfield, Townsend Bombing Range, Fort Eisenhower, Robins Air Force Base, Marine Corps Logistics Base-Albany, Moody Air Force Base, and Naval Submarine Base Kings Bay. Together, these defense facilities support heavy armor maneuver areas, unimpeded air-to-ground ranges, live-fire training facilities, low-level flight routes, and ballistic missile submarine fleets, which are a key component of the nuclear triad identified in the National Defense Strategy. The military accounts for a significant portion of the state’s economy, with an annual economic impact of over \$13 billion. The Georgia Sentinel Landscape also encompasses a high concentration of prime timber land and large swaths of longleaf pine forests. Compared to other tree species, longleaf pines have a greater resilience to climate-related threats that are currently impacting communities within the Georgia Sentinel Landscape such as wildfire, hurricanes, and drought. Georgia Sentinel Landscape partners are committed to strengthening military readiness by supporting agricultural communities, sustaining working forests, promoting coastal resiliency, and improving water quality.



The Townsend Bombing Range and its surrounding land support the conservation of the Gopher Tortoise and 12 other species, either state or federally protected. (Photo by Lance Cpl. Christian Moreno)

## Landscape Goals



Prevent the listing of the Gopher Tortoise and safeguard other species of concern by fully implementing the Georgia Gopher Tortoise Initiative within the boundaries of the landscape.



Promote working land conservation and compatible use within Readiness and Environmental Protection Integration Program projects.



Conserve and improve management practices on lands critical to water resources within the Savannah River Basin.



Protect undeveloped coastal sites and promote coastal resiliency.

## LANDSCAPE DETAIL

Total Sentinel Landscape Area: **6,387,436** acres

Total Protected  
Acres:  
**223,370**

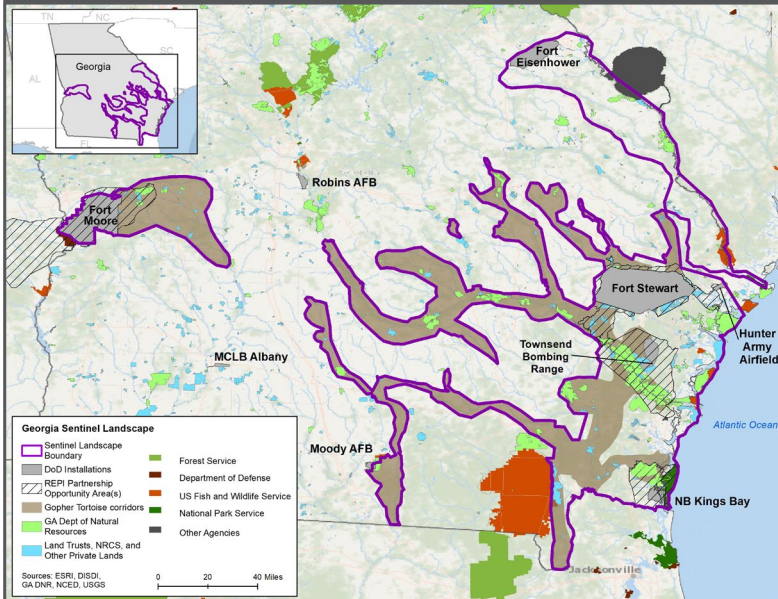
From year established  
through fiscal year 2022

Total Enrolled  
Acres:  
**346,809**

For fiscal year 2022

Active  
Base Area:  
**615,290**

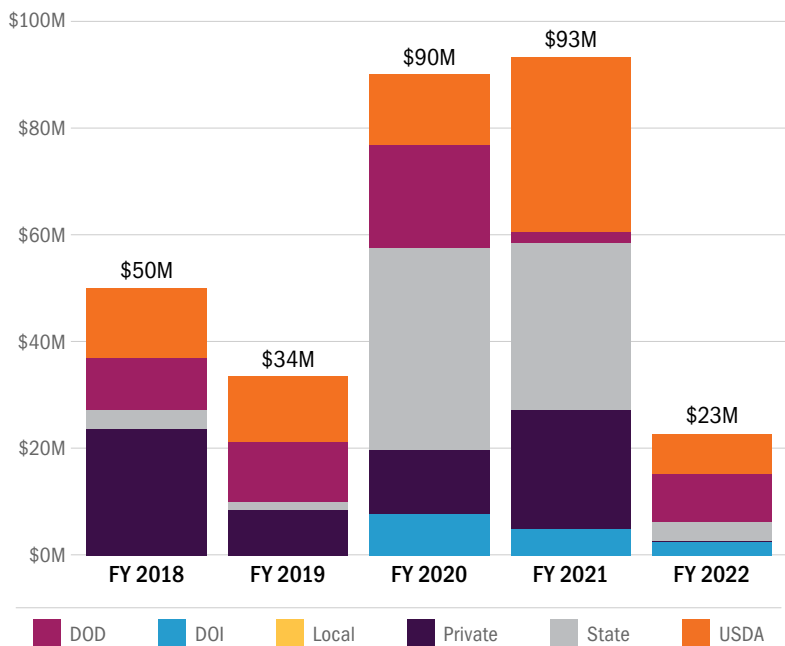
## Georgia Sentinel Landscape Map



## Key Partners

- ▶ American Forest Foundation
- ▶ Athens Land Trust
- ▶ Coastal Georgia Regional Commission
- ▶ Ducks Unlimited
- ▶ Fort Moore
- ▶ Fort Eisenhower
- ▶ Fort Stewart and Hunter Army Airfield
- ▶ Georgia Conservancy
- ▶ Georgia Department of Natural Resources
- ▶ Georgia Forestry Commission
- ▶ Georgia-Alabama Land Trust
- ▶ Longleaf Alliance
- ▶ Marine Corps Logistics Base Albany
- ▶ Middle Georgia Regional Commission
- ▶ Moody Air Force Base
- ▶ National Wild Turkey Federation
- ▶ Naval Submarine Base Kings Bay
- ▶ Open Space Institute
- ▶ Robins Air Force Base
- ▶ The Conservation Fund
- ▶ The Nature Conservancy
- ▶ Townsend Bombing Range
- ▶ U.S. Endowment for Forestry and Communities
- ▶ National Parks Conservation Association
- ▶ U.S. Department of Agriculture, Farm Service Agency
- ▶ U.S. Department of Agriculture, Forest Service
- ▶ U.S. Department of Agriculture, Natural Resource Conservation Service
- ▶ U.S. Department of Defense, Readiness and Environmental Protection Integration
- ▶ U.S. Department of the Interior, Fish and Wildlife Service
- ▶ U.S. Department of the Interior, National Park Service

## Georgia Sentinel Landscape Total Funding by Partner



LANDSCAPE COORDINATOR CONTACT: Ken Bradley | [georgia@sentinellandscapes.org](mailto:georgia@sentinellandscapes.org)