

# MOJAVE DESERT SENTINEL LANDSCAPE

CALIFORNIA | Est. 2024



The Mojave Desert Sentinel Landscape in California covers about 3.5 million acres of the western Mojave Desert and is located north of Los Angeles and the Inland Empire. The partnership includes five military installations: the Marine Corps Air Ground Combat Center, National Training Center Fort Irwin, Edwards Air Force Base, Naval Air Weapons Station China Lake, and Marine Corps Logistics Base Barstow. It encompasses multi-mission public lands and over 40 protected species, including the Mojave desert tortoise and western Joshua tree. The presence of impacted protected species and natural resources off-installation limit the ability of both the military and the National Aeronautics and Space Administration to test, research, train, and operate on the additional 2.8 million acres of military installations that surround the sentinel landscape.

The Mojave Desert Sentinel Landscape unites a broad coalition of state, federal, tribal, county, local, and non-governmental partners to tackle challenges from incompatible development and climate change. Key objectives of the landscape partners include recovering threatened, endangered or sensitive species; restoring habitat and ecosystem function by creating species corridors and improving soil health; and managing watersheds to build resilience to a warmer, more arid climate. These efforts support the evolving needs of the Department of Defense (DOD) missions in the region and protect the desert's vulnerable soil and water resources, native vegetation, and working lands.

## Landscape Goals



Reduce vehicle strikes killing threatened, endangered, or sensitive species and facilitate connectivity to increase species, ecosystem, and climate resilience.



Reclaim and rehabilitate priority habitats by supporting the protection, restoration, wildfire restoration, and rehabilitation of up to 50,000 acres.



Provide community outreach in tandem with habitat enhancement to increase the success of conservation and resilience activities.



Reduce and mitigate impacts from illegal activities, such as unauthorized off-highway vehicle use, and illegal cannabis grows.



Develop sustainable and climate resilient seed propagation agricultural practices and seed growing cooperatives.



Desert tortoises have existed for millions of years, and during that time they adapted to the many climatic and geological changes that have occurred in southern California.. (Photo by Dana Wilson, BLM)

## LANDSCAPE DETAIL

Total Sentinel Landscape Area: **3,539,077** acres

Total Protected Acres:

**0**

From year established through fiscal year 2023

Total Enrolled Acres:

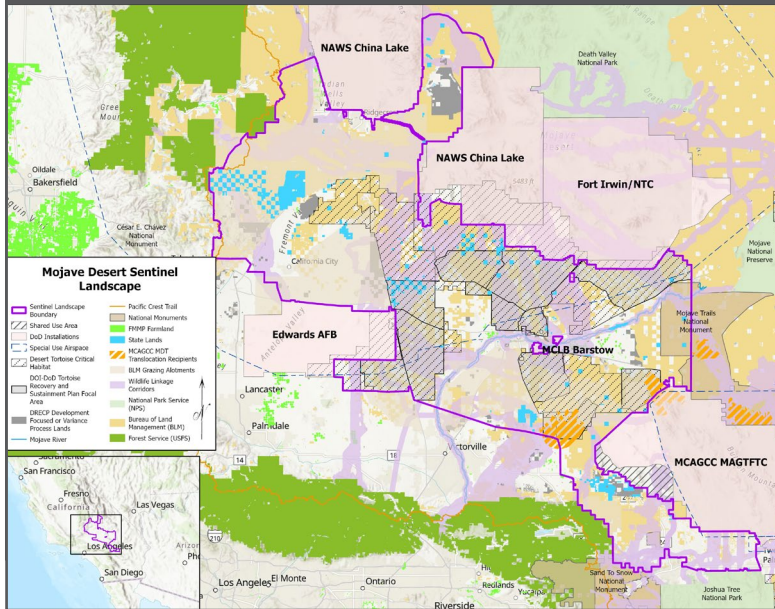
**0**

For fiscal year 2023

Active Base Area Acres:

**364**

## Mojave Desert Sentinel Landscape Map



A UH-60 Blackhawk helicopter sits under Milky Way galaxy in the Mojave Desert, at the National Training Center, Fort Irwin, California. (Photo by Mississippi National Guard Staff Sgt. Tim Morgan, 102<sup>nd</sup> Public Affairs Detachment)

## Key Partners

- ▶ BLM Seeds of Success
- ▶ California Department of Fish and Wildlife
- ▶ California Natural Resources Agency
- ▶ California State Parks
- ▶ Caltrans
- ▶ Death Valley National Park
- ▶ Desert Manager's Group
- ▶ Desert Tortoise Council
- ▶ Desert Tortoise Recovery Office
- ▶ DOI BLM, California Desert District
- ▶ Eastern Kern County Resource Conservation District
- ▶ Edwards Air Force Base
- ▶ Joshua Tree National Park
- ▶ Marine Corps Air Ground Combat Center
- ▶ Marine Corps Logistics Base Barstow
- ▶ Mojave Desert Land Trust
- ▶ Mojave Desert Resource Conservation District
- ▶ National Fish and Wildlife Foundation
- ▶ National Training Center Ft Irwin, US Army
- ▶ Naval Air Weapons Station China Lake
- ▶ Preservation Ranch
- ▶ San Bernardino County
- ▶ State Lands Commission
- ▶ Transition Habitat Conservancy
- ▶ Trust for Public Land
- ▶ U.S. Department of Agriculture, Natural Resources Conservation Service
- ▶ U.S. Department of the Interior (DOI) Bureau of Land Management (BLM), California
- ▶ U.S. Forest Service
- ▶ U.S. Geological Survey, Western Ecological Research Center
- ▶ University of California Los Angeles
- ▶ University of California Riverside
- ▶ Wildlife Conservation Board



LANDSCAPE COORDINATOR CONTACT: Madeline Drake | [madeline.drake@resources.ca.gov](mailto:madeline.drake@resources.ca.gov)