

# SOUTH CAROLINA LOWCOUNTRY SENTINEL LANDSCAPE

SOUTH CAROLINA | Est. 2023



The South Carolina Lowcountry Sentinel Landscape supports the missions of Marine Corps Air Station Beaufort, Marine Corps Recruit Depot Parris Island, and Naval Support Facility Beaufort—installations that contribute \$2.2 billion to the regional economy and provide nearly 20,000 jobs. Their missions include recruiting and training U.S. Marines, supporting operations for the 2<sup>nd</sup> Marine Aircraft Wing, and providing critical medical services for active-duty Navy and Marine personnel.

Surrounding these installations are more than 2.2 million acres of longleaf pine forest, ranchlands, salt marsh, forested wetlands, and unbroken wildlife corridors in the southeastern corner of South Carolina. This diverse landscape provides essential natural infrastructure and habitat for imperiled species, while also supporting working farms and forests that are compatible with military readiness.

Partners established the South Carolina Lowcountry Sentinel Landscape in 2023 to protect ecologically significant areas, drinking water supplies, and working farmlands, all with the goal of maintaining long-term military readiness and installation resilience across the landscape.

## Landscape Goals



Support compatible land uses and protect working farms and forests to prevent development that conflicts with military operations.



Establish and promote the Lowcountry Sentinel Landscape to ensure long-term military readiness.



Enhance environmental and operational resilience by promoting nature-based solutions to protect critical infrastructure.



Protect and enhance ecologically significant areas to support imperiled species.



Preserve drinking water quality and quantity and protect the health of local watersheds.



U.S. Marine Corps Staff Sgt. Brian Hodgson takes part in a Marine Air-Ground Task Force demonstration during the Beaufort Airshow at Marine Corps Air Station Beaufort, South Carolina. (U.S. Marine Corps photo by Lance Cpl. Kayla LeClaire)

## LANDSCAPE DETAIL

Total Sentinel Landscape Area: **2,256,592** acres

Total Protected  
Acres:  
**14,923**

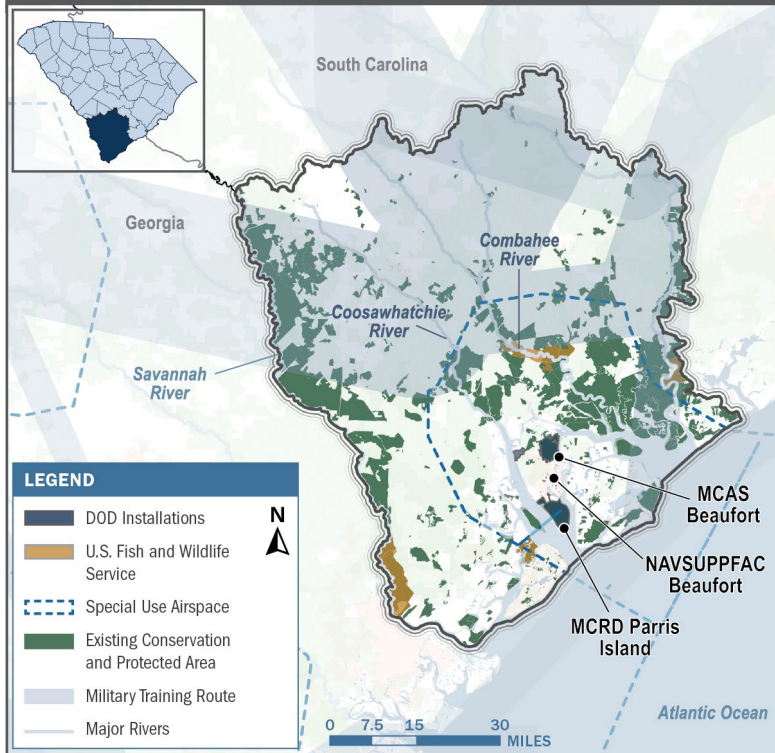
From year established  
through fiscal year 2023

Total Enrolled  
Acres:  
**84,420**

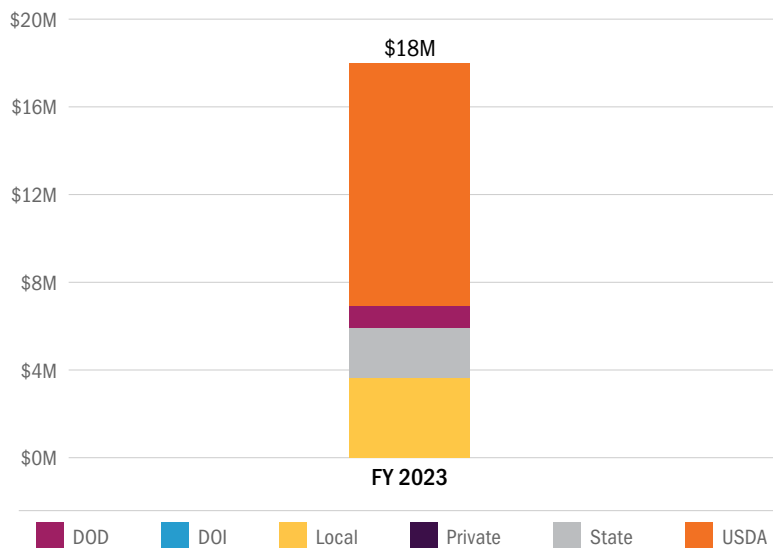
For fiscal year 2023

Active Base  
Area Acres:  
**13,597**

## South Carolina Lowcountry Sentinel Landscape Map



## South Carolina Lowcountry Sentinel Landscape Total Funding by Partner



## Key Partners

- ▶ Ashepoo, Combahee, and Edisto (ACE) River Basin National Estuarine Research Reserve
- ▶ ACE Basin Task Force
- ▶ ACE—South Carolina Lowcountry (SOLO) Longleaf Partnership
- ▶ Beaufort-Jasper Water & Sewer Authority
- ▶ Center for Heirs Property Preservation
- ▶ Ducks Unlimited
- ▶ Georgia Sentinel Landscape
- ▶ Gullah/Gechee Sea Island Coalition
- ▶ Gullah Geechee Cultural Heritage Corridor
- ▶ Local county and municipal governments
- ▶ Lowcountry Council of Governments
- ▶ Lowcountry Land Trust
- ▶ Nemours Wildlife Foundation
- ▶ Open Land Trust
- ▶ Open Space Institute
- ▶ Port Royal Sound Foundation
- ▶ SC Conservation Bank
- ▶ SC Department of Natural Resources
- ▶ SC Department of Veterans' Affairs
- ▶ SC Forestry Commission
- ▶ SC Office of Resilience
- ▶ SC State Parks
- ▶ Soil and Water Conservation Districts
- ▶ South Atlantic Salt Marsh Initiative
- ▶ Southeast Conservation Adaptation Strategy
- ▶ Southeast Regional Partnership for Planning and Sustainability
- ▶ The Longleaf Alliance
- ▶ The Nature Conservancy
- ▶ U.S. Department of Agriculture Natural Resources Conservation Service
- ▶ U.S. Fish and Wildlife Service
- ▶ U.S. Forest Service
- ▶ U.S. Marine Corps
- ▶ U.S. National Park Service
- ▶ U.S. Navy



LANDSCAPE COORDINATOR CONTACT: Dana Bauer | [dana@openlandtrust.org](mailto:dana@openlandtrust.org)