

JOINT BASE LEWIS-MCCHORD SENTINEL LANDSCAPE

WASHINGTON | Est. 2013



Designated in 2013, the Joint Base Lewis McChord (JBLM) Sentinel Landscape was the first federally recognized sentinel landscape in the nation. It is anchored by one of the largest installations in the U.S. Army, which is home to over 295,000 soldiers, civilians, dependents, and retirees. JBLM encompasses 63,000 acres of military training area, including over 7,000 acres of impact area, 86 ranges and mortar points, 13 drop zones, and two airfields. In addition, the sentinel landscape supports the majority of the remaining prairie habitat in the South Puget Sound. For decades, prairie lands in the region have deteriorated due to rapid development and increased demand on natural resources. Conversely, the ecosystem has thrived on JBLM where development is minimal and periodic fires caused by prescribed burning and military training activities have maintained healthy vegetation. This has resulted in many species that rely on the prairie habitat, including the Taylor's checkerspot butterfly, Mazama pocket gopher, and streaked horned lark, seeking refuge on JBLM training lands. The JBLM Sentinel Landscape partners have worked together to identify and act upon three strategic goals that aim to maintain the South Puget Sound agricultural landscape, restore lost native South Puget Sound prairie land, support and protect native threatened and endangered species, and increase JBLM training flexibility.



Prescribed burning is an essential conservation tool for restoring native prairie within the JBLM Sentinel Landscape. (Photo by Lauren Finnegan, JBLM Public Affairs Office)

Landscape Goals



Increase military training flexibility by creating opportunities to conserve prairies and listed species outside of the installation.



Preserve the South Puget Sound agricultural landscape and mitigate development pressures by promoting mutually beneficial projects that enhance agricultural viability, support sustainable community development, and contribute to prairie conservation on working lands.



Protect and enhance listed and other rare species, along with their habitats beyond the landscape's boundaries, by promoting conservation and reducing the likelihood of additional listings within the sentinel landscape.

LANDSCAPE DETAIL

Total Sentinel Landscape Area: **787,369** acres

Total Protected
Acres:
24,245

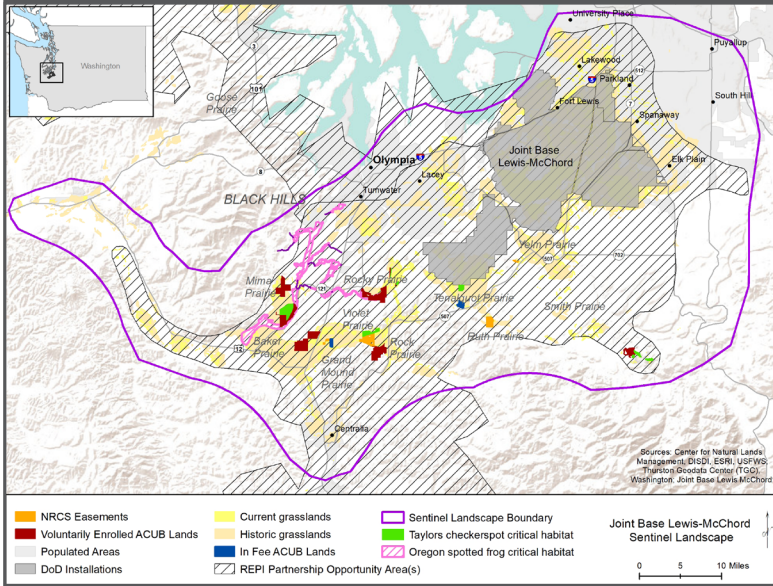
From year established
through fiscal year 2022

Total Enrolled
Acres:
363

For fiscal year 2022

Active Base
Area Acres:
91,322

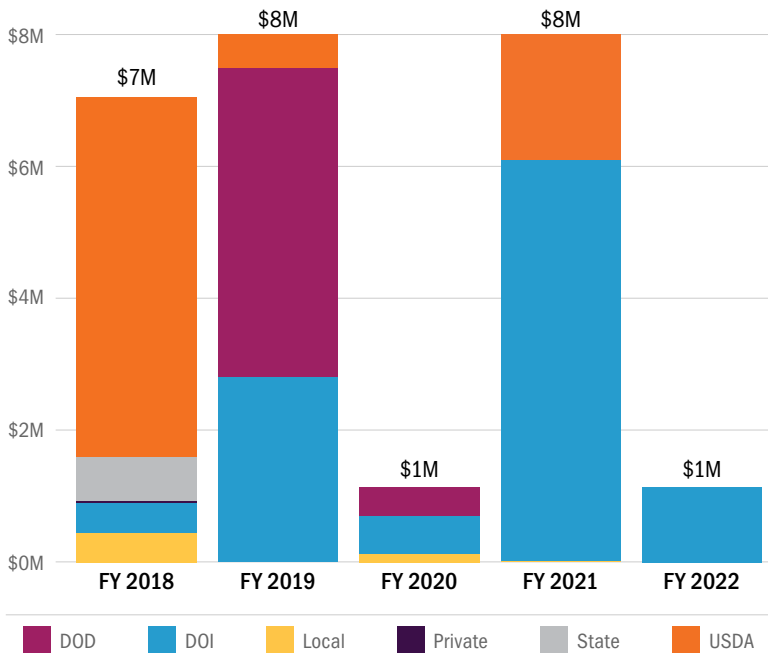
Joint Base Lewis-McChord Sentinel Landscape Map



Key Partners

- ▶ Capitol Land Trust
- ▶ Center for Natural Lands Management
- ▶ Ecostudies Institute
- ▶ Enterprise for Equity
- ▶ Evergreen State College
- ▶ Nisqually Land Trust
- ▶ Nisqually River Council
- ▶ Northwest Rangeland Trust
- ▶ Oregon Zoo
- ▶ Pierce County
- ▶ Pierce County Conservation District
- ▶ South of the Sound Community Farmland Trust
- ▶ Thurston Conservation District
- ▶ Thurston County
- ▶ U.S. Department of Agriculture, Natural Resources Conservation Service
- ▶ U.S. Department of Defense, Readiness and Environmental Protection Integration Program
- ▶ U.S. Department of the Interior, Fish and Wildlife Service
- ▶ University of Washington
- ▶ Washington Department of Corrections
- ▶ Washington Department of Fish and Wildlife
- ▶ Washington Department of Natural Resources
- ▶ Washington Department of Veterans Affairs
- ▶ Washington Farmland Trust
- ▶ Washington State Department of Agriculture and Washington State Conservation Commission
- ▶ Washington State University Extension
- ▶ Wolf Haven International

Joint Base Lewis-McChord Sentinel Landscape Total Funding by Partner



LANDSCAPE COORDINATOR CONTACT: Dan Calvert, PhD | dan@sentinellandscapes.org