

# JOINT BASE LEWIS-MCCHORD

## SENTINEL LANDSCAPE

WASHINGTON | Est. 2013



Designated in 2013, the Joint Base Lewis-McChord (JBLM) Sentinel Landscape was the first federally recognized sentinel landscape. It is anchored by one of the largest installations in the U.S. Army, JBLM, which is home to over 295,000 soldiers, civilians, dependents, and retirees. JBLM encompasses 63,000 acres of military training area, including over 7,000 acres of impact area, 86 ranges and mortar points, 13 drop zones, and two airfields.

In addition, the sentinel landscape supports the majority of the South Puget Sound's remaining prairie habitat. For decades, prairie lands in the region have deteriorated due to rapid development and increased demand on natural resources. Conversely, the ecosystem has thrived on JBLM where development is minimal, and periodic fires caused by prescribed burning and military training activities have maintained healthy vegetation. This has resulted in many species that rely on the prairie habitat, including the Taylor's checkerspot butterfly, Mazama pocket gopher, and streaked horned lark seeking refuge on JBLM training lands.

The JBLM Sentinel Landscape partners collaborate to maintain the South Puget Sound agricultural landscape, protect and restore native South Puget Sound prairies, and advance recovery and management of threatened and endangered species. These actions support the military mission of JBLM by: 1) addressing regulatory, administrative, and procedural barriers to increase training flexibility; 2) working with off-installation community members to help on-installation planners meet future mission requirements and training needs; and 3) protecting open space, much of which is in agricultural production, through voluntary coordination with local landowners.

### Landscape Goals



Increase military training flexibility by supporting land uses along the JBLM boundary that are compatible with on-installation operations, such as open space and agriculture, and creating off-installation opportunities to conserve prairie habitats and the listed and rare species found at JBLM.



Preserve the South Puget Sound agricultural landscape and reduce development pressures by promoting mutually beneficial projects enhancing agricultural viability, supporting sustainable community development, and contributing to prairie conservation on working lands.



Promote conservation actions that protect and enhance listed and other rare species found within the Sentinel Landscape boundary throughout their range to reduce the likelihood of future listings.



Four of the U.S. Air Force Air Demonstration Squadron "Thunderbirds" fly F-16 Fighting Falcon aircraft above the McChord Field flightline in preparation for the Joint Base Lewis-McChord Airshow and Warrior Expo before landing at JBLM, Washington. (U.S. Air Force photo by Staff Sgt. Zoe Thacker)

### LANDSCAPE DETAIL

Total Sentinel Landscape Area: **787,369** acres

Total Protected  
Acres:

**22,098**

From year established  
through fiscal year 2023

Total Enrolled  
Acres:

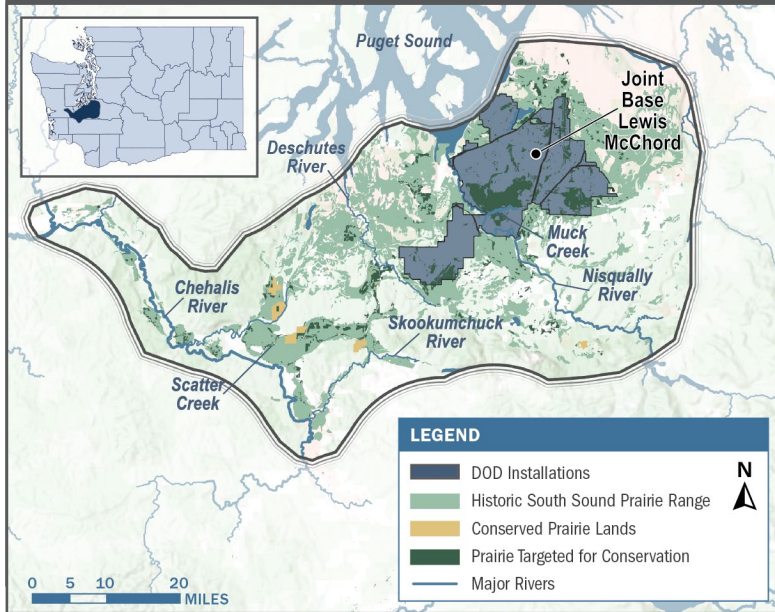
**658**

For fiscal year 2023

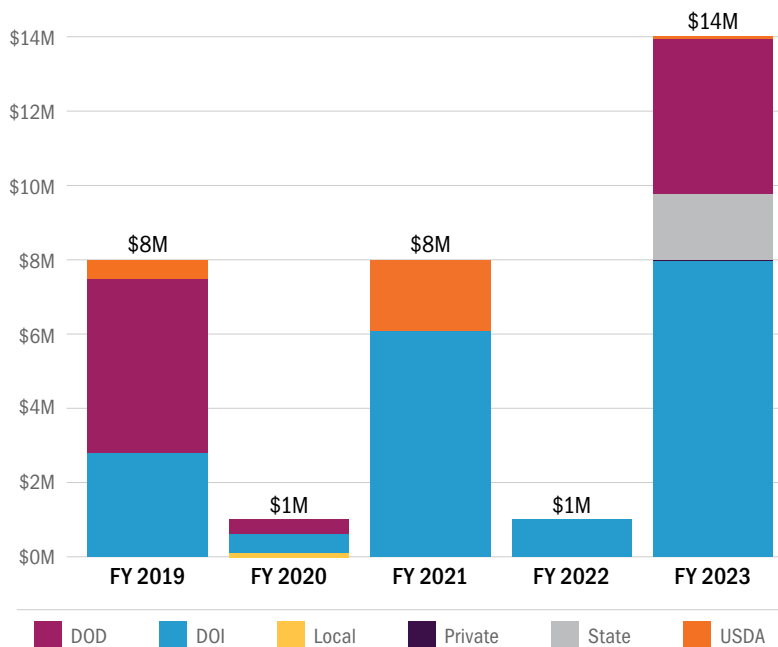
Active Base  
Area Acres:

**91,322**

## Joint Base Lewis-McChord Sentinel Landscape Map



## Joint Base Lewis-McChord Sentinel Landscape Total Funding by Partner



## Key Partners

- ▶ Capitol Land Trust
- ▶ Center for Natural Lands Management
- ▶ Ecostudies Institute
- ▶ Enterprise for Equity
- ▶ Evergreen State College
- ▶ Nisqually Land Trust
- ▶ Nisqually River Council
- ▶ Northwest Rangeland Trust
- ▶ Oregon Zoo
- ▶ Pierce County
- ▶ Pierce County Conservation District
- ▶ South of the Sound Community Farmland Trust
- ▶ Thurston Conservation District
- ▶ Thurston County
- ▶ U.S. Department of Agriculture, Natural Resources Conservation Service
- ▶ U.S. Department of Defense, Readiness and Environmental Protection Integration Program
- ▶ U.S. Department of the Interior, Fish and Wildlife Service
- ▶ University of Washington
- ▶ Washington Department of Corrections
- ▶ Washington Department of Fish and Wildlife
- ▶ Washington Department of Natural Resources
- ▶ Washington Department of Veterans Affairs
- ▶ Washington Farmland Trust
- ▶ Washington State Department of Agriculture and Washington State Conservation Commission
- ▶ Washington State University Extension
- ▶ Wolf Haven International



LANDSCAPE COORDINATOR CONTACT: Dan Calvert, PhD | [dan@sentinellandscapes.org](mailto:dan@sentinellandscapes.org)