

SOUTHERN INDIANA SENTINEL LANDSCAPE

INDIANA | Est. 2022



The Southern Indiana Sentinel Landscape is anchored by four critical Department of Defense installations and ranges: Naval Support Activity Crane, the Lake Glendora Test Facility, Atterbury-Muscatatuck Training Center, and the Indiana Air Range Complex. These installations and ranges provide a variety of testing and training opportunities for the Army, Navy, Air Force, Marine Corps, National Guard, as well as federal and state partners. This vast landscape also contains six state parks, seven state forests, nine state fish and wildlife areas, 39 state-dedicated nature preserves, one National Forest, and three National Wildlife Refuges. With the primary objective of preserving and protecting military mission readiness, operations, testing and training capabilities, the Southern Indiana Sentinel Landscape partners will also promote and support agricultural and working lands; provide for watershed and riparian corridor protections thus promoting landscape resiliency; sustain and restore forest lands through sustainable land management and protections; and ensure endangered, threatened and at-risk species protection through habitat preservation and restoration.



The Southern Indiana Sentinel Landscape protects farms and forests by securing conservation easements and restoring oak-hickory forest ecosystems. This effort benefits federally endangered species such as the Indiana and northern long-eared bats. (Photo by U.S. Fish and Wildlife Service)

Landscape Goals



Preserve and protect mission readiness, operations, and testing/training capabilities on all military lands and ranges.



Support sustainable farming and forestry practices to conserve rural working lands for environmental, ecological, and economical benefits.



Restore and sustain ecosystems, improving function and resilience to ongoing and future challenges and ensuring a healthy environment and clean water.



Promote collaboration to ensure thriving communities within the landscape, considering access to safe and healthy food, sustainable housing and commercial development, job security, cultural resources, and diversity.



Address local impacts of global climate change through built infrastructure and natural climate solutions, fostering a more resilient landscape.

LANDSCAPE DETAIL

Total Sentinel Landscape Area: **3,633,555** acres

Total Protected
Acres:
6,035

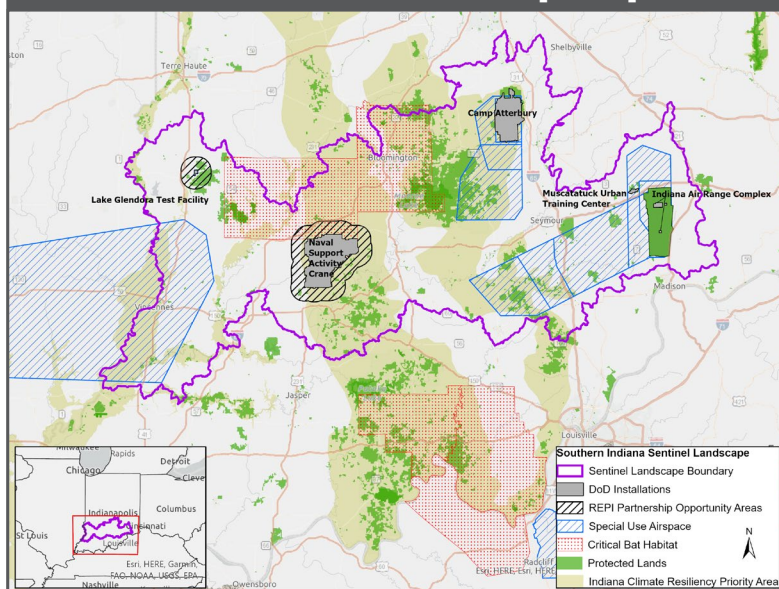
From year established
through fiscal year 2022

Total Enrolled
Acres:
215,302

For fiscal year 2022

Active Base
Area Acres:
132,493

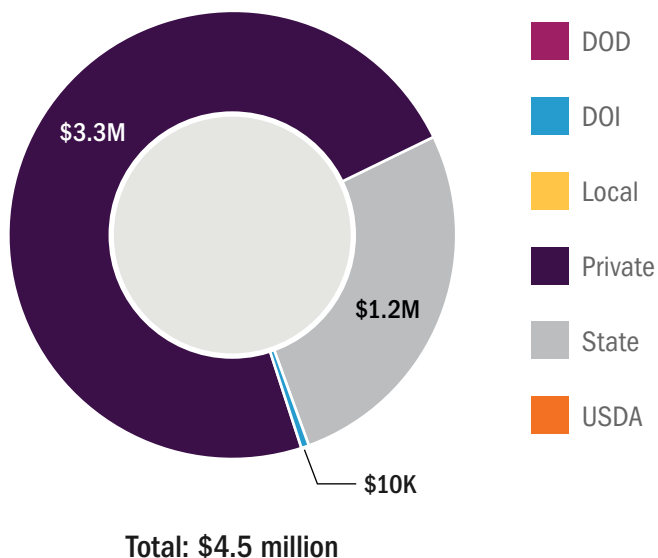
Southern Indiana Sentinel Landscape Map



Key Partners

- ▶ American Bird Conservancy
- ▶ Central Indiana Land Trust
- ▶ Conservation Cropping Systems Initiative
- ▶ Conservation Law Center
- ▶ Friends of Lake Monroe
- ▶ George Rogers Clark Land Trust
- ▶ Indiana Air National Guard - Indiana Air Range Complex
- ▶ Indiana Army National Guard - Atterbury-Muscatatuck Training Center
- ▶ Indiana Association of Soil and Water Conservation Districts
- ▶ Indiana Corn Marketing Council
- ▶ Indiana Department of Natural Resources
- ▶ Indiana Forestry and Woodland Owners Association
- ▶ Indiana Karst Conservancy
- ▶ Indiana Prescribed Fire Council
- ▶ Indiana Soybean Alliance
- ▶ Indiana State Department of Agriculture
- ▶ Indiana University Environmental Resilience Institute
- ▶ Let the Sunshine IN (LSSI)
- ▶ National Wild Turkey Federation
- ▶ Oak Heritage Conservancy
- ▶ Ouabache Land Conservancy
- ▶ Radius Indiana
- ▶ Regional Opportunities Initiative
- ▶ State of Indiana Cooperative Invasives Management
- ▶ Sycamore Land Trust
- ▶ The American Farmland Trust
- ▶ The Nature Conservancy
- ▶ U.S. Department of Agriculture
- ▶ U.S. Department of Defense
- ▶ U.S. Department of Interior, Natural Resources Conservation Service
- ▶ U.S. Fish and Wildlife Service
- ▶ U.S. Forest Service - Hoosier National Forest
- ▶ U.S. Navy - Lake Glendora Test Facility
- ▶ U.S. Navy - Naval Support Activity Crane
- ▶ White River Military Coordination Alliance

Southern Indiana Sentinel Landscape Total Funding by Partner



LANDSCAPE COORDINATOR CONTACT: Michael Spalding | mspalding@sentrinellandscapes.org