

SOUTH CAROLINA LOWCOUNTRY SENTINEL LANDSCAPE

SOUTH CAROLINA | Est. 2023



The South Carolina Lowcountry Sentinel Landscape supports immense biodiversity, encompassing more than 2.2 million acres of longleaf pine forest, ranchlands, salt marsh, forested wetlands, and unbroken wildlife corridors in the southeastern corner of South Carolina.

The landscape supports training activities for Marine Corps Air Station Camp Beaufort, Marine Corps Recruit Depot Parris Island, and Naval Support Facility Beaufort, contributing \$2.2 billion to the regional economy and providing nearly 20,000 jobs. The installation missions include recruiting and training U.S. Marines, supporting operations for the 2nd Marine Aircraft Wing, and providing critical medical services for active-duty Navy and Marine personnel.

Partners established the South Carolina Lowcountry Sentinel Landscape in 2023 to work on protecting ecologically significant areas, drinking water supplies, and working farmlands, all with the goal of maintaining long-term military readiness and climate resilience across the landscape.



Ghost trees, like those seen along Huspah Creek, showcase the impact of sea level rise and salinity changes in the marsh migration process throughout the landscape. (Photo by Lowcountry Council of Governments)

Landscape Goals



Reduce vulnerabilities to climate change by promoting nature-based solutions to restore and/or enhance the inherent resilience of the landscape and protect critical infrastructure.



Protect and enhance ecologically significant areas to support imperiled species.



Protect source water quality and supplies through landscape-scale conservation.



Support and protect working farms and forests and ensure equitable access to conservation programs to prevent development that is incompatible with military operations.



Leverage local, state, and Federal funding sources for acquiring working lands easements that protect strategic properties from development that could impact military readiness.

LANDSCAPE DETAIL

Total Sentinel Landscape Area: **2,256,592** acres

Total Protected Acres:

0

From year established through fiscal year 2022

Total Enrolled Acres:

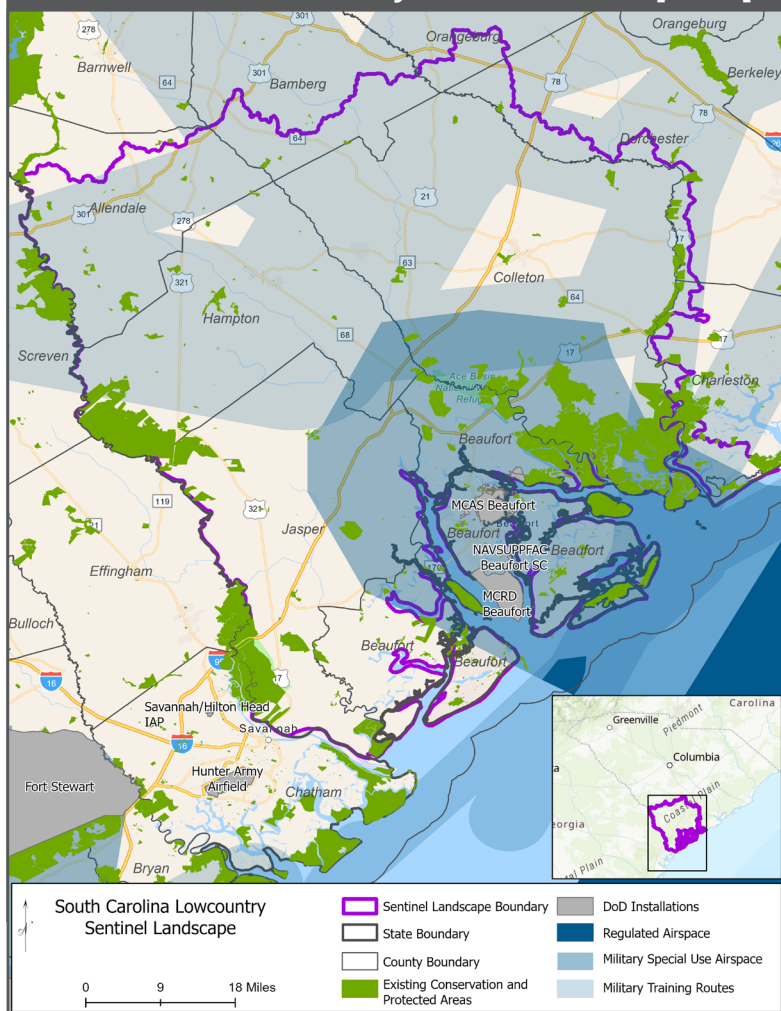
0

For fiscal year 2022

Active Base Area Acres:

13,597

South Carolina Lowcountry Sentinel Landscape Map



A cattle farm, protected with a conservation and restrictive easement through the active REPI program, safeguards farmland west of Marine Corps Air Station Beaufort. (Photo by Open Land Trust)

Key Partners

- ▶ Ashepoo, Combahee, and Edisto (ACE) River Basin National Estuarine
- ▶ Research Reserve
- ▶ ACE Basin Task Force
- ▶ ACE—South Carolina Lowcountry (SOLO) Longleaf Partnership
- ▶ Beaufort County Rural and Critical Lands Program
- ▶ Center for Heirs Property Preservation
- ▶ Ducks Unlimited
- ▶ Georgia Sentinel Landscape
- ▶ Local governments – counties and municipalities
- ▶ Lowcountry Open Land Trust
- ▶ Nemours Wildlife Foundation
- ▶ Open Land Trust
- ▶ Open Space Institute
- ▶ Port Royal Sound Foundation
- ▶ Savannah River Clean Water Fund
- ▶ SC Conservation Bank
- ▶ SC Department of Natural Resources
- ▶ SC Forestry Commission
- ▶ SC Office of Resilience
- ▶ SC State Parks
- ▶ Soil and Water Conservation Districts
- ▶ SOLO Task Force
- ▶ South Atlantic Saltmarsh Initiative
- ▶ Southeast Conservation Adaptation Strategy
- ▶ The Longleaf Alliance
- ▶ The Nature Conservancy
- ▶ U.S. Department of Agriculture Natural Resources Conservation Service
- ▶ U.S. Fish and Wildlife Service
- ▶ U.S. Forest Service
- ▶ U.S. Marine Corps
- ▶ U.S. National Park Service
- ▶ U.S. Navy



LANDSCAPE COORDINATOR CONTACT: Kate Schaefer | kate@openlandtrust.org