

# EASTERN NORTH CAROLINA SENTINEL LANDSCAPE

NORTH CAROLINA | Est. 2017



The Eastern North Carolina Sentinel Landscape spans nearly 11 million acres across a 33-county region in North Carolina's Coastal Plain and Sandhills. Home to seven key military installations and ranges—Fort Liberty and Camp Mackall, Seymour Johnson Air Force Base and the Dare County Range, Marine Corps Base Camp Lejeune, and Marine Corps Air Stations Cherry Point and New River, military related activity is the second economic driver in the state. The partners of the Eastern North Carolina Sentinel Landscape have and continue to partner together to strengthen military readiness while simultaneously bolstering the economies of forests and farms, conserve natural resources that provide ecosystem services, public benefits through outdoor recreation opportunities, and increase resilience capacity in managing climate change.

## Landscape Goals



Sustain and enhance key mission capabilities for North Carolina's military installations and ranges now and into the future while promoting compatible land use and supporting communities near those installations.



Improve the productivity of working lands in collaboration with all landowners, connecting to various public recreation and natural land opportunities that enhance both food and ecosystem security, as well as economic health.



Enhance wildlife habitat and corridors, including those for threatened and endangered species, to improve water quality and quantity, reduce future wildfire risk, and increase resilience across the landscape.



Improve the collective knowledge and understanding of both non-climate and climate drivers at a landscape scale to support long-range planning, enhancing the resilience of human and natural communities across the entire landscape.



Facilitate the connection of partnership efforts across the landscape and provide support to existing partners anchored near the installations.



A forestry technician observes a prescribed burn in the LE training area at Marine Corps Base Camp Lejeune. Prescribed burns are used to effectively restore the native ecosystems and to reduce risk of an uncontrolled wild fire. (U.S. Marine Corps photo by Lance Cpl. Ashley Gomez)

## LANDSCAPE DETAIL

Total Sentinel Landscape Area: **10,999,359**

Total Protected  
Acres:  
**194,047**

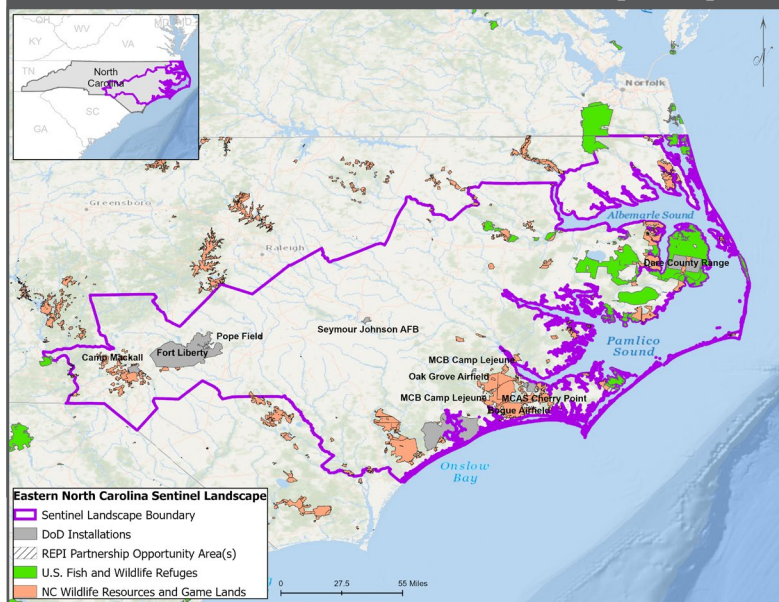
From year established  
through fiscal year 2022

Total Enrolled  
Acres:  
**265,724**

For fiscal year 2022

Active Base  
Area Acres:  
**267,913**

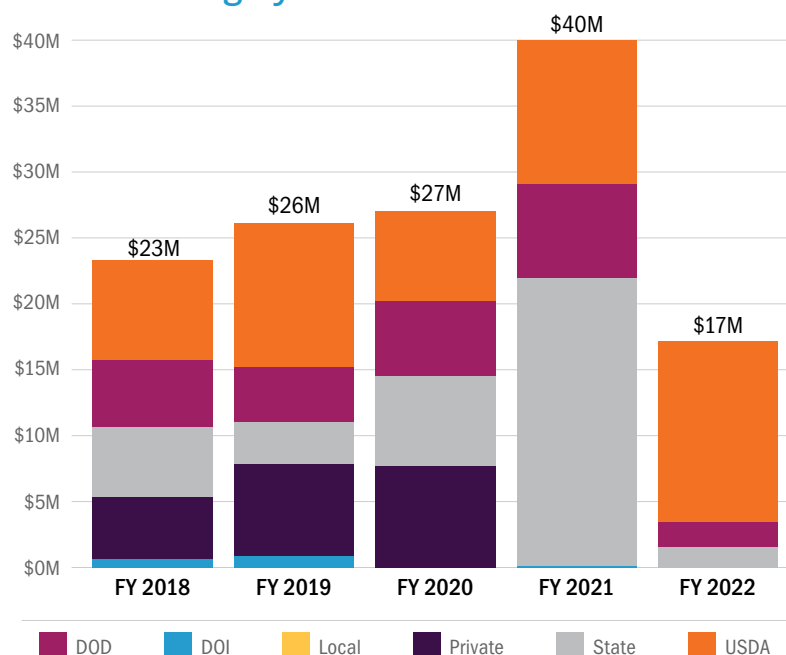
## Eastern North Carolina Sentinel Landscape Map



## Key Partners

- ▶ Brooks Pierce
- ▶ Cape Fear Arch Conservation Collaborative
- ▶ Conservation Finance Network
- ▶ Conservation Fund for NC
- ▶ Conservation Trust for North Carolina
- ▶ Environmental Defense Fund
- ▶ Fort Liberty Regional Land Use Advisory Commission
- ▶ Mountains to Sea Trail
- ▶ National Fish and Wildlife Foundation
- ▶ NC East Alliance
- ▶ NC Sandhills Conservation Partnership
- ▶ NC Sandhills Prescribed Burn Association
- ▶ North Carolina Albemarle-Pamlico National Estuary Partnership
- ▶ North Carolina Association of Soil & Water Conservation Districts
- ▶ North Carolina Coastal Federation
- ▶ North Carolina Coastal Land Trust
- ▶ North Carolina Department of Agriculture and Consumer Services
- ▶ North Carolina Department of Commerce
- ▶ North Carolina Department of Military and Veterans Affairs
- ▶ North Carolina Department of Natural and Cultural Resources
- ▶ North Carolina Department of Transportation
- ▶ North Carolina Farm Bureau Federation
- ▶ North Carolina Forestry Association
- ▶ North Carolina Foundation for Soil and Water Conservation
- ▶ North Carolina Grange
- ▶ North Carolina Sea Grant
- ▶ North Carolina State University College of Natural Resources
- ▶ North Carolina State University Cooperative Extension
- ▶ North Carolina Wildlife Resources Commission
- ▶ North Carolina Wildlife Resources Commission
- ▶ Onslow Bight Conservation Forum
- ▶ Regional Land Use Advisory Commission
- ▶ South Atlantic Landscape Conservation Cooperative
- ▶ Southern Group of State Foresters
- ▶ Sustainable Forestry and African American Land Retention
- ▶ The Conservation Fund
- ▶ The Nature Conservancy
- ▶ Triangle Land Conservancy
- ▶ U.S. Air Force—Seymour Johnson AFB and Dare County Range
- ▶ U.S. Army—Fort Bragg and Camp Mackall
- ▶ U.S. Department of Agriculture, Farm Service Agency
- ▶ U.S. Department of Agriculture, Forest Service and Croatan National Forest
- ▶ U.S. Department of Agriculture, Natural Resource Conservation Service
- ▶ U.S. Department of Commerce, National Oceanic and Atmospheric Administration
- ▶ U.S. Department of Defense, Office of Local Defense Community Cooperation
- ▶ U.S. Department of Defense, Readiness and Environmental Protection Integration
- ▶ U.S. Department of the Interior, Fish and Wildlife Service
- ▶ U.S. Department of the Interior, National Park Service, Trails and Conservation Assistance Program
- ▶ U.S. Marine Corps—MCB Camp Lejeune, MCAS Cherry Point, MCAS New River
- ▶ U.S. Navy, Navy Region Mid Atlantic
- ▶ University of Mount Olive College

## Eastern North Carolina Sentinel Landscape Total Funding by Partner



LANDSCAPE COORDINATOR CONTACT: Chris Baillie | [chrisb@nccoast.org](mailto:chrisb@nccoast.org)