

EASTERN NORTH CAROLINA SENTINEL LANDSCAPE

NORTH CAROLINA | Est. 2017



The Eastern North Carolina Sentinel Landscape (ENCSL) spans nearly 11 million acres across 33 counties in North Carolina’s Coastal Plain and Sandhills regions. The sentinel landscape is home to seven key military installations and ranges: Fort Roland L. Bragg and Camp Mackall, Seymour Johnson Air Force Base, Marine Corps Base Camp Lejeune, Marine Corps Air Stations (MCAS) Cherry Point and New River, and the Dare County Range. North Carolina has the third largest military presence in the country, and Fort Bragg, an ENCSL anchoring installation, is the largest Army installation by population. This sentinel landscape is also home to the F-15E Strike Eagle Formal Training Unit Basic Course, qualifying Airmen in F15E air-to-air and air-to-ground missions at Seymour Johnson Air Force Base. Additionally, MCAS Cherry Point, the largest Marine Corps Air Station, is home to the 2nd Marine Aircraft Wing and Fleet Readiness Center. Military activity in North Carolina ranks second only to agriculture as the state’s leading economic driver. The ENCSL helps protect the anchoring installations from wildfire, habitat degradation, flooding, and water resource vulnerabilities. To address these encroachment challenges, ENCSL partners design and implement nature-based infrastructure, restore critical floodplains, and promote stewardship of longleaf pine ecosystems. The landscape also collaborates with local governments to address off-base infrastructure vulnerabilities that impact defense-supporting communities. These actions improve soil health, safeguard water quality and supply, enhance biodiversity, and reinforce the long-term sustainability of working lands and defense readiness.

Landscape Goals



Maintain mission compatible land uses through strategic conservation of natural and working lands, enhancement of agricultural productivity and economic viability, and land-use planning.



Enhance and connect fish and wildlife habitat on public and private lands, increasing their resilience to human and natural disturbances, and support species to preclude their listing on the Endangered Species Act.



Enhance the resiliency of military installations, defense supporting communities, and infrastructure of shared military and civilian importance to natural hazards.



Increase awareness of the Eastern North Carolina Sentinel Landscape’s mission, its value to partners’ stakeholders, and opportunities for expanded stakeholder participation.



Paratroopers assigned to the 82nd Airborne Division conduct patrol operations during the Small Unit Ranger Tactics (S.U.R.T.) qualification course on Fort Liberty, North Carolina. (U.S. Army Photo by Sgt. 1st Class Joseph Truesdale)

LANDSCAPE DETAIL

Total Sentinel Landscape Area: **10,999,359**

Total Protected
Acres:
235,870

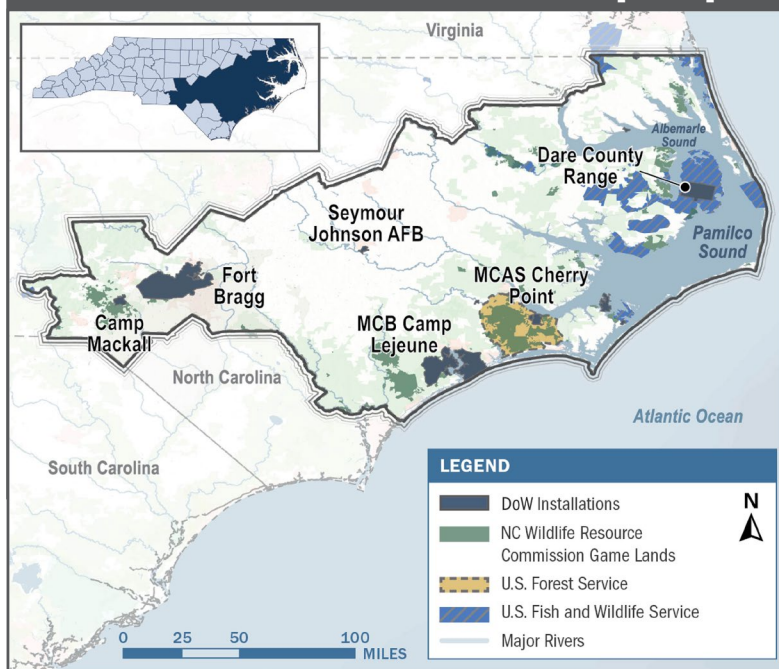
From year established
through fiscal year 2024

Total Enrolled
Acres:
298,043

For fiscal year 2024

Active Base
Area Acres:
267,913

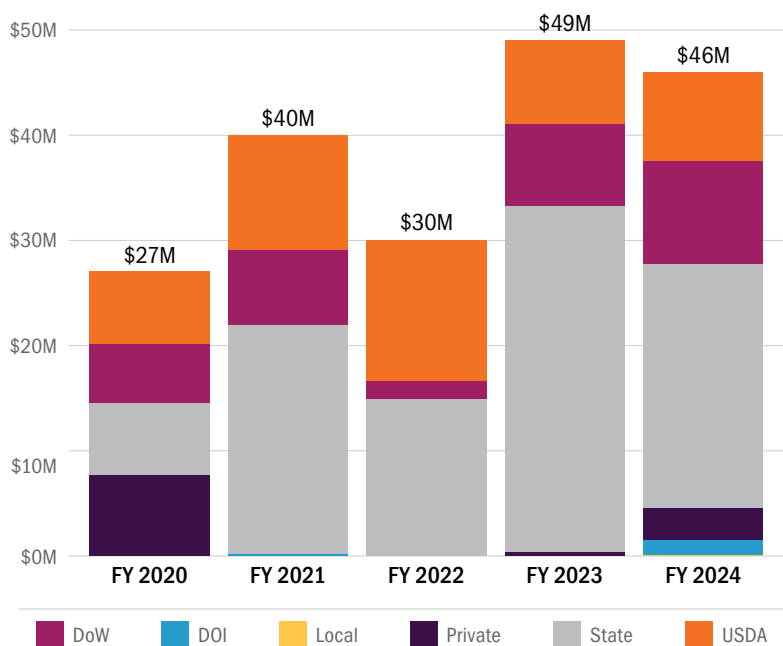
Eastern North Carolina Sentinel Landscape Map



Key Partners

- ▶ Albemarle-Pamlico National Estuary Partnership
- ▶ America's Longleaf Restoration Initiative
- ▶ Brooks Pierce
- ▶ Cape Fear Arch Conservation Collaboration
- ▶ Conservation Finance Network
- ▶ Conservation Legacy Conservation Corps of North Carolina
- ▶ Conservation Trust for North Carolina
- ▶ Environmental Defense Fund
- ▶ Fort Bragg Regional Land Use Advisory Commission
- ▶ Friends of the Mountains-to-Sea Trail
- ▶ Local Governments - Counties and Municipalities
- ▶ North Carolina Association of Soil & Water Conservation Districts
- ▶ North Carolina Coastal Federation
- ▶ North Carolina Coastal Land Trust
- ▶ North Carolina Department of Agriculture and Consumer Services
- ▶ North Carolina Department of Commerce
- ▶ North Carolina Department of Environmental Quality
- ▶ North Carolina Department of Military and Veterans Affairs
- ▶ North Carolina Department of Natural and Cultural Resources
- ▶ North Carolina Department of Transportation
- ▶ North Carolina Farm Bureau Federation
- ▶ North Carolina Forestry Association
- ▶ North Carolina Foundation for Soil and Water Conservation
- ▶ North Carolina Grange
- ▶ North Carolina Military Business Center
- ▶ North Carolina Sandhills Conservation Partnership
- ▶ North Carolina Sea Grant
- ▶ North Carolina State University - Coastal Dynamics Design Lab
- ▶ North Carolina State University - College of Natural Resources; Coastal Dynamics Design Lab
- ▶ North Carolina Wildlife Resources Commission
- ▶ Onslow Bight Conservation Forum
- ▶ Sandhills Prescribed Burn Association
- ▶ Sound Rivers
- ▶ South Atlantic Landscape Conservation Cooperative
- ▶ South Atlantic Salt Marsh Initiative
- ▶ Southeast Regional Partnership for Planning and Sustainability
- ▶ Southern Group of State Foresters
- ▶ Sustainable Forestry and African American Land Retention Network
- ▶ The Conservation Fund
- ▶ The Nature Conservancy
- ▶ Three Rivers Lands Trust
- ▶ Triangle Land Conservancy
- ▶ Unique Places to Save
- ▶ U.S. Air Force - Seymour Johnson AFB and Dare County Range
- ▶ U.S. Army - Fort Bragg and Camp Mackall
- ▶ U.S. Army Corps of Engineers
- ▶ U.S. Department of Agriculture, Farm Service Agency (FSA)
- ▶ U.S. Department of Agriculture, Forest Service (USFS)
- ▶ U.S. Department of Agriculture, Natural Resource Conservation Service (NRCS)
- ▶ U.S. Department of Commerce, National Oceanic and Atmospheric Administration (NOAA)
- ▶ U.S. Department of the Interior, Fish and Wildlife Service (USFWS)
- ▶ U.S. Department of the Interior, National Park Service (NPS)
- ▶ U.S. Department of War, Office of Local Defense Community Cooperation (OLDCC)
- ▶ U.S. Department of War, Readiness and Environmental Protection Integration (REPI)
- ▶ U.S. Marine Corps - MCB Camp Lejeune, MCAS Cherry Point, MCAS New River
- ▶ U.S. Navy, Navy Region Mid-Atlantic
- ▶ Working Land Trust

Eastern North Carolina Sentinel Landscape Total Funding by Partner



LANDSCAPE COORDINATOR CONTACT: Chris Baillie | chris@legacyworksgroup.com