

# GREAT SALT LAKE SENTINEL LANDSCAPE

UTAH | Est. 2024



The Great Salt Lake Sentinel Landscape spans over 2.7 million acres in northern Utah. The landscape contains four military installations with unique missions and capabilities, as well as the Western Hemisphere's largest saline lake and Utah's largest natural freshwater lake. Hill Air Force Base, Camp Williams, Tooele Army Depot, and Air Force Little Mountain Test Facility offer extensive training, testing, and logistical support for all Military Services. Hill Air Force Base also oversees the Utah Test and Training Range (UTTR), the largest block of contiguous special-use airspace in the continental United States. Great Salt Lake, Utah Lake, and the lakes' tributaries are vital waterways that support Utah's defense communities and ecosystems.

The increasingly arid Great Salt Lake Basin presents a host of ecological, economic, and public health challenges for the State of Utah, which is one of the nation's fastest growing and driest states. Utahns are grappling with limited water supply amidst increased demand. While population growth stresses water resources, a drying Great Salt Lake threatens critical wildlife habitat, air quality, snowpack, recreation, and Utah's economy. Additionally, population growth in the Great Salt Lake basin has driven incompatible development around military installations, placing constraints on training activities.

The partners of the Great Salt Lake Sentinel Landscape are committed to addressing these challenges and more by aligning interests, maximizing resources, and building resilience in Utah's military installations, defense communities, and ecosystems for decades to come.



US Army Paratroopers assigned to the 19<sup>th</sup> prepare to complete the proper landing procedures to prevent the risk of injuries during an Airborne jump on February 25, 2023 near Camp Williams. (Photo by SPC Christopher Hall, Utah National Guard)

## Landscape Goals



Maintain and improve military installation and community resilience by mitigating impacts from incompatible development in a manner that will reinforce agriculture, wildlife habitat, and recreation.



Mitigate the effects of catastrophic wildfire through fuel management and agency collaboration.



Bolster installation and community resilience through projects that enhance and protect water sources and the Great Salt Lake ecosystem.



Protect and preserve migratory bird and mule deer migration corridors through projects that safeguard critical habitat.

## LANDSCAPE DETAIL

Total Sentinel Landscape Area: **2.77 million acres**

Total Protected  
Acres:

**0**

From year established  
through fiscal year 2024

Total Enrolled  
Acres:

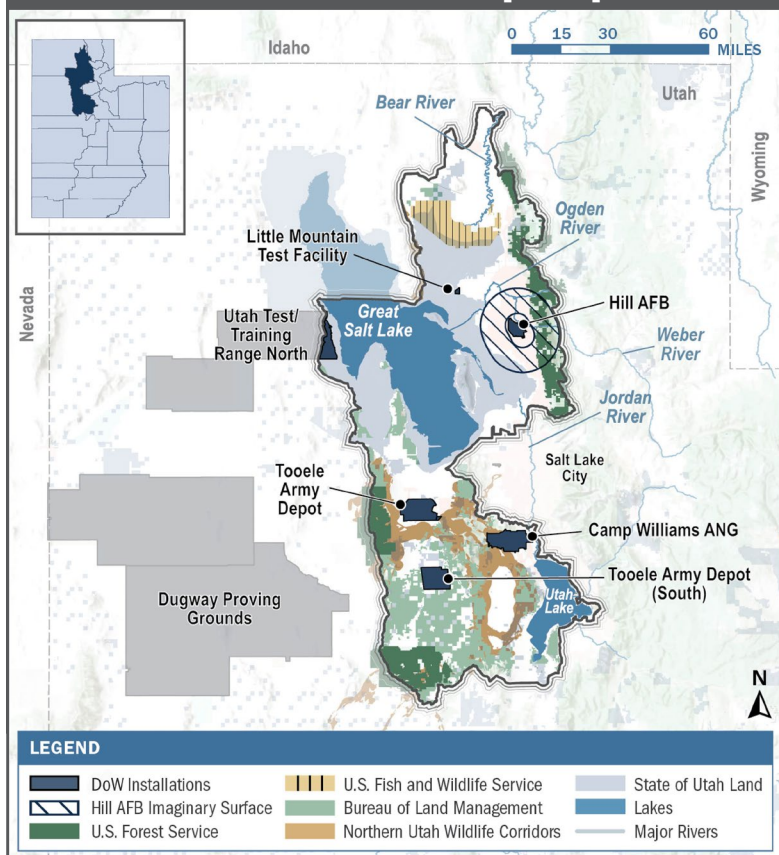
**0**

For fiscal year 2024

Active Base  
Area Acres:

**77,373**

## Great Salt Lake Sentinel Landscape Map



## Key Partners

- ▶ Bear River Land Conservancy
- ▶ Compatible Lands Foundation
- ▶ Ducks Unlimited
- ▶ Eagle Mountain City
- ▶ Eagle Mountain Nature and Wildlife Alliance
- ▶ FRIENDS of Great Salt Lake
- ▶ GSL Watershed Enhancement Trust
- ▶ Herriman City
- ▶ Hill Air Force Base
- ▶ Hinterland Institute
- ▶ Intermountain West Joint Venture
- ▶ Jordan River Commission
- ▶ Layton City
- ▶ Little Mountain Test Facility
- ▶ McCulley Watershed Consulting Services
- ▶ Military Installation Development Authority
- ▶ National Audubon Society
- ▶ National Fish and Wildlife Foundation
- ▶ Northwestern Band of the Shoshone
- ▶ Office of the GSL Commissioner
- ▶ Pheasants Forever
- ▶ Salt Lake County
- ▶ SWCA Environmental Consultants
- ▶ The Conservation Fund
- ▶ The Nature Conservancy
- ▶ Tooele Army Depot
- ▶ Trout Unlimited
- ▶ U.S. Army Corps of Engineers
- ▶ U.S. Department of Agriculture, Forest Service
- ▶ U.S. Department of Agriculture, Natural Resources Conservation Service
- ▶ U.S. Department of Interior, Bureau of Land Management
- ▶ U.S. Department of Interior, Fish and Wildlife Service
- ▶ U.S. Department of War, Readiness and Environmental Protection Integration Program
- ▶ U.S. Geological Survey
- ▶ Utah Association of Conservation Districts
- ▶ Utah Defense Alliance
- ▶ Utah Department of Agriculture and Food
- ▶ Utah Department of Natural Resources
- ▶ Utah Department of Veteran and Military Affairs
- ▶ Utah Division of Indian Affairs
- ▶ Utah Lake Authority
- ▶ Utah National Guard – Camp Williams
- ▶ Utah Open Lands
- ▶ Utah State University Janet Quinney Lawson Institute for Land, Water and Air
- ▶ Utah Trust Lands Administration
- ▶ Utah Wildlife Federation
- ▶ Wasatch Front Regional Water Quality Council
- ▶ Western Rivers Conservancy
- ▶ World Resources Institute



Migrating avocets stop to feed in the shallows off of Antelope Island on Great Salt Lake. (Photo by Shauna Hart, Utah Wildlife Federation)



LANDSCAPE COORDINATOR CONTACT: Marisa Weinberg | [marisaweinberg@utah.gov](mailto:marisaweinberg@utah.gov)