

# EASTERN NORTH CAROLINA SENTINEL LANDSCAPE

est. 2017



The Eastern North Carolina Sentinel Landscape spans 11 million acres across a 33-county region in North Carolina’s Coastal Plain and Sandhills. The Eastern North Carolina Sentinel Landscape spans nearly 11 million acres across a 33-county region in North Carolina’s Coastal Plain and Sandhills. Home to seven key military installations and ranges—Fort Bragg and Camp Mackall, Seymour Johnson Air Force Base and the Dare County Range, Marine Corps Base Camp Lejeune, and Marine Corps Air Stations Cherry Point and New River, military related activity is the second economic driver in the state. The partners of the Eastern North Carolina Sentinel Landscape have and continue to partner together to strengthen military readiness while simultaneously bolstering the economies of forests and farms, conserve natural resources that provide ecosystem services, public benefits through outdoor recreation opportunities, and increase resilience capacity in managing climate change.

## SENTINEL LANDSCAPE PARTNERS IMPROVE EFFICIENCY FOR LAND PROTECTION

The Eastern North Carolina Sentinel Landscape partners set out to simplify the process of securing a conservation easement. Conservation easements maintain the private ownership of a property while permanently prohibiting certain types of development. In certain circumstances, government programs have the ability to split the cost of easements on properties that benefit multiple federal and state agencies. Despite sharing the cost of acquisition, government agencies typically record their easement restrictions separately, which means that property owners must consult multiple legal documents to understand their land management responsibilities, which can be cumbersome. To remedy this, the North Carolina Department of Agriculture and Consumer Services collaborated with the U.S. Department of Agriculture’s Natural Resource Conservation Service (NRCS) to develop an Eastern North Carolina Sentinel Landscape common

Figure 1: Eastern North Carolina Sentinel Landscape Map

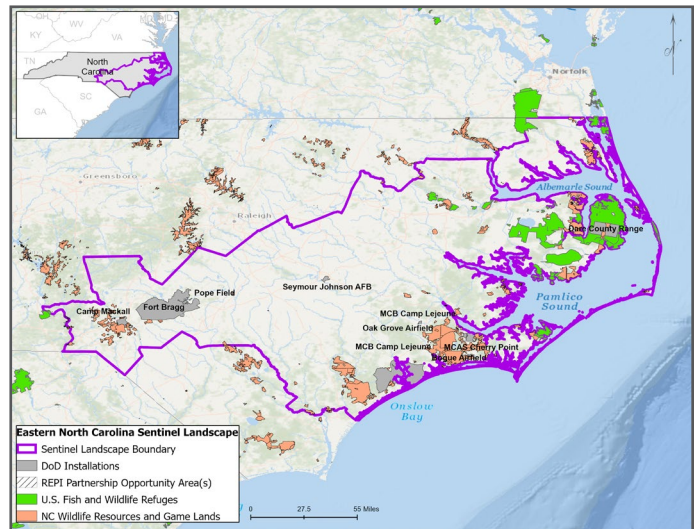


Table 1: Eastern North Carolina Sentinel Landscape Footprint Details (from year established through fiscal year 2021)

Total Protected Acres <sup>1</sup>	181,762
Total Enrolled Acres <sup>2</sup>	1,114,863
Active Base Area	267,913
<b>Total Sentinel Landscape Area</b>	<b>10,990,233</b>

“This project represents a new level of coordination... agriculture is North Carolina’s biggest industry followed by the military, and it is more important than ever that we work to protect the farmland that produces our food and fiber and maintains our military readiness.”

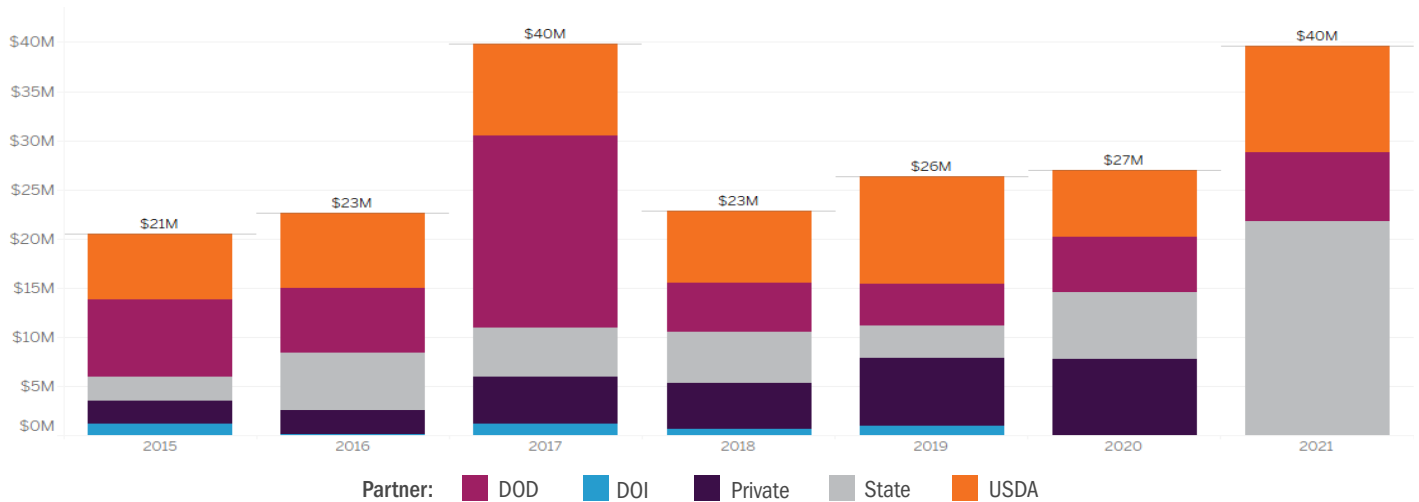
– Steve Troxler, North Carolina Agriculture Commissioner

easement template that consolidates agency requirements into a single deed, cutting the easement process time in half.

<sup>1</sup> Protected acres are recognized as land acquisitions—fee simple or easement—that have completed the due diligence and closing actions necessary to obtain a real estate interest.

<sup>2</sup> Land is considered enrolled if the property owner voluntarily participates in a federal or state land-management program that provides financial or technical assistance to promote sustainable agricultural practices, restore imperiled species and their habitat, or preserve critical natural resources; or if a landowner or an organization receives a federal or state grant to conduct a conservation project on said property.

**Figure 2:** Eastern North Carolina Sentinel Landscape Total Funding by Partner



**SPECIES RECOVERY EFFORTS STRENGTHEN MILITARY READINESS**

The U.S. Navy and the U.S. Marine Corps partnered with the National Fish and Wildlife Foundation, and the North Carolina Wildlife Resources Commission to establish the first partnership agreement under the Red-Cockaded Woodpecker (RCW) Recovery and Sustainment Program (RASP), a program jointly developed by the U.S. Marine Corps and the U.S. Fish and Wildlife Service. This partnership, strengthened by the establishment of the Eastern North Carolina Sentinel Landscape, works to enhance training flexibility at MCB Camp Lejeune by alleviating environmental restrictions associated with the listing of the RCW under the Endangered Species Act. To that end, the partners are helping

the installation reach and maintain its recovery goal of 173 RCW clusters, as mandated by the U.S. Fish and Wildlife Service.

To achieve its goal, partners are targeting resources towards establishing 60 RCW clusters across two protected properties in the coastal North Carolina region—the 13,000-acre Bear Garden tract and the 3,000-acre Stones Creek Game land—to promote the recovery of the RCW on compatible, off-base properties while maintaining and enhancing military training and operational flexibility on the installation. Expanding the qualifying RCW habitat and establishing new clusters beyond installation borders not only supports endangered species recovery, but also reduces the likelihood of additional military training impacts.

**Key Partners**

- ★ U.S. Air Force—Seymour Johnson AFB and Dare County Range
- ★ U.S. Army—Fort Bragg and Camp MacKall
- ★ U.S. Department of Agriculture, Farm Service Agency
- ★ U.S. Department of Agriculture, Forest Service and Croatan National Forest
- ★ U.S. Department of Agriculture, Natural Resource Conservation Service
- ★ U.S. Department of Commerce, National Oceanic and Atmospheric Administration
- ★ U.S. Department of Defense, Office of Local Defense Community Cooperation
- ★ U.S. Department of Defense, Readiness and Environmental Protection Integration
- ★ U.S. Department of the Interior, Fish and Wildlife Service
- ★ U.S. Department of the Interior, National Park Service, Trails and Conservation Assistance Program
- ★ U.S. Marine Corps—MCB Camp Lejeune, MCAS Cherry Point, MCAS New River
- ★ U.S. Navy, Navy Region Mid Atlantic
- ★ North Carolina Albemarle-Pamlico National Estuary Partnership
- ★ North Carolina Department of Agriculture and Consumer Services
- ★ North Carolina Department of Commerce
- ★ North Carolina Department of Military and Veterans Affairs
- ★ North Carolina Department of Natural and Cultural Resources
- ★ North Carolina Department of Transportation
- ★ North Carolina State University College of Natural Resources
- ★ North Carolina State University Cooperative Extension
- ★ NC East Alliance
- ★ North Carolina Association of Soil & Water Conservation Districts
- ★ North Carolina Farm Bureau Federation
- ★ North Carolina Forestry Association
- ★ North Carolina Foundation for Soil and Water Conservation
- ★ North Carolina Wildlife Resources Commission
- ★ Bragg Alliance
- ★ Brooks, Pierce, McLendon, Humphrey & Leonard, LLP
- ★ Cape Fear Arch Conservation Collaborative
- ★ Conservation Trust for North Carolina
- ★ Conservation Finance Network
- ★ Conservation Fund for NC
- ★ Fort Bragg Regional Land Use Advisory Commission
- ★ Environmental Defense Fund
- ★ Mountains to Sea Trail
- ★ National Fish and Wildlife Foundation
- ★ North Carolina Coastal Federation
- ★ North Carolina Coastal Land Trust
- ★ North Carolina Grange
- ★ North Carolina Sea Grant
- ★ North Carolina Wildlife Resources Commission
- ★ NC Sandhills Conservation Partnership
- ★ NC Sandhills Prescribed Burn Association
- ★ Onslow Bight Conservation Forum
- ★ Regional Land Use Advisory Commission
- ★ South Atlantic Landscape Conservation Cooperative
- ★ Southern Group of State Foresters
- ★ Sustainable Forestry and African American Land Retention
- ★ The Conservation Fund
- ★ The Nature Conservancy
- ★ Triangle Land Conservancy