

# CAMP BULLIS SENTINEL LANDSCAPE

TEXAS | Est. 2022



The Camp Bullis Sentinel Landscape encompasses ranchlands, growing towns and cities, and spring-fed rivers within the Texas Hill Country. The landscape is anchored by Joint Base San Antonio-Camp Bullis, which provides training opportunities for 266 mission partners. This installation supports all Department of Defense medic field training, military intelligence, special forces, pre-deployment, and other national and international defense operations.

With rapid population growth emanating from San Antonio and the I-35 corridor, the Camp Bullis Sentinel Landscape faces mounting challenges to the long-term resilience of the region's natural resources and military infrastructure. Incompatible development contributes to the loss of agricultural lands and increased ambient light pollution, disrupting night-time military training. Camp Bullis, situated in Flash Flood Alley, also faces flooding issues from an increase in impervious surfaces around the base. Growing demands on existing water supplies have led to the loss of spring flow and aquifer drawdowns, affecting water availability for Camp Bullis, rural landowners, and local population centers.

In 2022, the Camp Bullis Sentinel Landscape Partnership (CBSL) was formed to address these and other challenges. The CBSL is a locally driven, non-regulatory collaboration committed to mission sustainment at Joint Base San Antonio-Camp Bullis. Partnership work is based on the understanding that what happens outside of a military installation can impact military readiness on-base. Hence, CBSL works with volunteering private landowners and communities around Camp Bullis to support local needs that are compatible with mission training. CBSL secures and leverages technical and financial resources to support natural resources conservation, bolster agricultural productivity, protect night skies, and reduce regional threats from drought, flooding, and wildfire.

## Landscape Goals



Sustain access to key training areas to minimize flood risks that could damage training infrastructure like live-fire ranges, maneuver lands, and training sites.



Protect flight training routes and the combat assault landing strip by mitigating encroachment.



Reduce light pollution to maintain an effective low light training environment and preserve night-time training capabilities.



Enhance and sustain military installation and community resilience through natural resource stewardship.



U.S. Army soldiers disperse to accurately mark their starting points and plan their movements during the day-time land navigation iteration on Camp Bullis, Texas. (U.S. Army Photo by Pfc. Stanislav Mitchell)

## LANDSCAPE DETAIL

Total Sentinel Landscape Area: **949,744 acres**

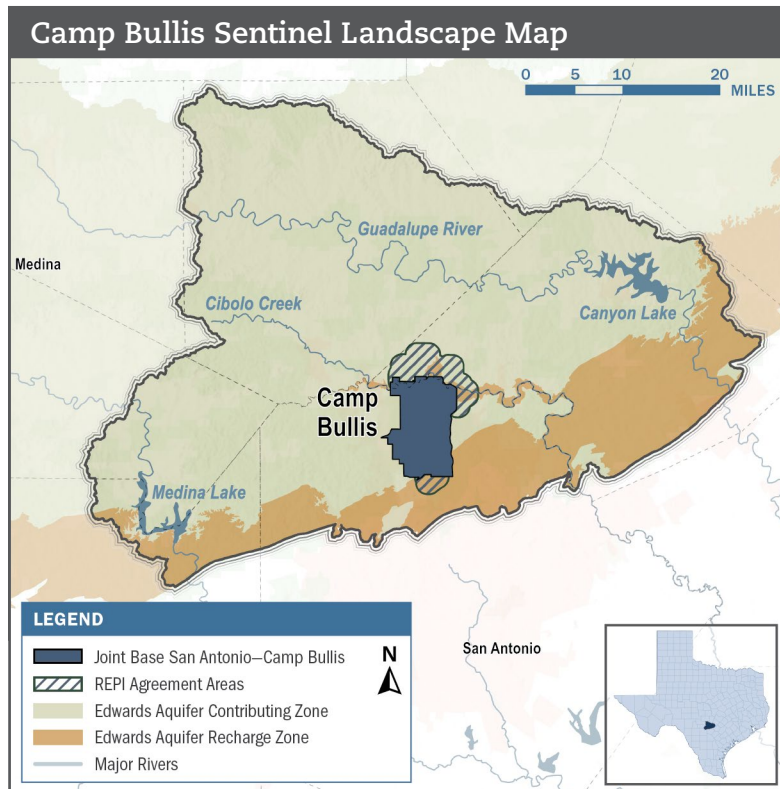
Total Protected  
Acres:  
**3,233**

From year established  
through fiscal year 2023

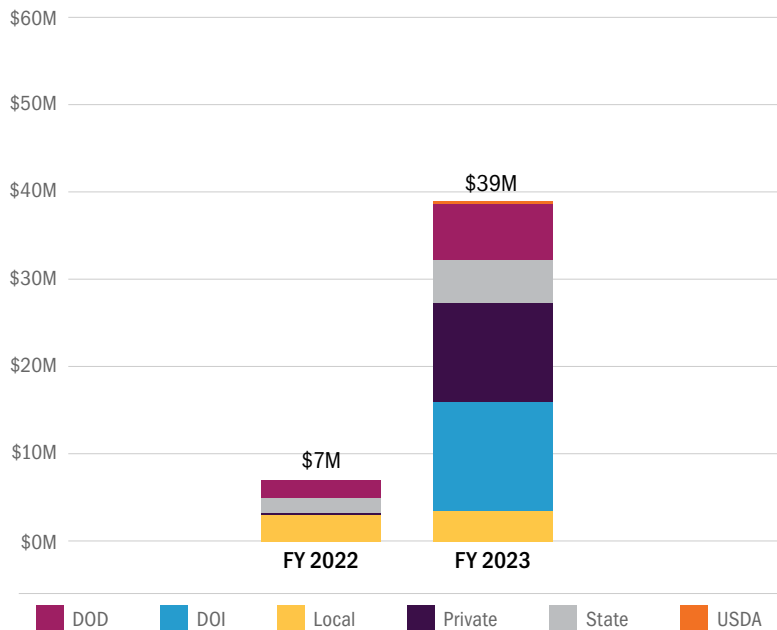
Total Enrolled  
Acres:  
**18,327**

For fiscal year 2023

Active Base  
Area Acres:  
**28,000**



## Camp Bullis Sentinel Landscape Total Funding by Partner



## Key Partners

- ▶ Alamo Area Council of Governments
- ▶ Alamo Resource Conservation & Development Area, Inc.
- ▶ Bandera County River Authority & Groundwater District
- ▶ Bat Conservation International
- ▶ Bexar Audubon Society
- ▶ Camp Stanley
- ▶ Cibola Center for Conservation
- ▶ Cibola Conservancy
- ▶ City of San Antonio
- ▶ Comal Conservation
- ▶ Comal Country Friends of the Night Skies
- ▶ Compatible Lands Foundation
- ▶ Cow Creek Groundwater Conservation District
- ▶ DarkSky International – Texas Chapter
- ▶ Edwards Aquifer Authority
- ▶ Edwards Aquifer Conservancy
- ▶ Federal Emergency Management Agency
- ▶ Great Springs Project
- ▶ Greater Edwards Aquifer Alliance
- ▶ Green Spaces Alliance
- ▶ Guadalupe-Blanco River Trust
- ▶ Headwaters at the Comal
- ▶ Hill Country Alliance
- ▶ Hill Country Conservancy
- ▶ Hill Country Fire Coalition of Texas
- ▶ Joint Base San Antonio
- ▶ Kendall Country Friends of the Night Skies
- ▶ Kendall County Soil & Water Conservation District
- ▶ National Cave and Karst Research Institute
- ▶ Oaks and Prairies Joint Venture
- ▶ San Antonio Board of Realtors
- ▶ San Antonio Chamber of Commerce
- ▶ San Antonio Hispanic Chamber of Commerce
- ▶ San Antonio River Authority
- ▶ Society for Ecological Restoration – Texas Chapter
- ▶ Texas A&M Forest Service
- ▶ Texas A&M Natural Resources Institute
- ▶ Texas Agricultural Land Trust
- ▶ Texas Department of Agriculture
- ▶ Texas Division of Emergency Management
- ▶ Texas Military Department
- ▶ Texas Military Preparedness Commission
- ▶ Texas Parks and Wildlife Department
- ▶ Texas State Soil & Water Conservation Board
- ▶ Texas State University – Meadows Center for Water & the Environment
- ▶ Texas Wildlife Association
- ▶ The Nature Conservancy – Texas Chapter
- ▶ Trinity Glen Rose Groundwater Conservation District
- ▶ Trust for Public Land
- ▶ University of Oklahoma – SC CASC
- ▶ University of Texas – San Antonio
- ▶ U.S. Air Force Civil Engineer Center
- ▶ U.S. Army Corps of Engineers
- ▶ U.S. Army Regional Environmental and Energy Office
- ▶ U.S. Department of Agriculture – Natural Resources Conservation Service
- ▶ U.S. Department of Interior – Fish & Wildlife Service
- ▶ U.S. Department of Interior – National Park Service Rivers, Trails and Conservation Assistance Program
- ▶ U.S. Department of Interior – U.S. Geological Survey



LANDSCAPE COORDINATOR CONTACT: Daniel Oppenheimer | [daniel@hillcountryalliance.org](mailto:daniel@hillcountryalliance.org)