

Developing a Compelling Sentinel Landscape Designation Proposal



**2026 Sentinel Landscape Designation Cycle
January 2025**

SENTINEL LANDSCAPES



Allegra Wrocklage

DOD REPI Program Contract Support

Allegra.a.wrocklage.ctr@mail.mil

Carl Palmer

Executive Director, LegacyWorks Group

Carl@legacyworksgroup.com



LEGACYWORKS
GROUP

Agenda

- Sentinel Landscapes Partnership and FCC Overview
- 2026 Designation Cycle Timeline and Expression of Interest Walkthrough
- Resources



SENTINEL LANDSCAPES



The U.S. Department of Agriculture, U.S. Department of Defense, and U.S. Department of the Interior established the Sentinel Landscapes Partnership in 2013 through a **Memorandum of Understanding**. FEMA joined the partnership in 2024.

The Partnership's goals are to:

- Strengthen military readiness
- Bolster agricultural and forestry productivity
- Conserve natural resources
- Increase public access to outdoor recreation
- Enhance resilience to changing environmental conditions



SENTINEL LANDSCAPES



- Sentinel landscapes are areas where **conservation, working lands, and national defense interests converge.**
- They must be anchored by at least one **military installation or range** and contain high priority lands for USDA, DOD, DOI, and FEMA.
- They encompass agricultural and/or forestry lands and are the appropriate size and scale needed to address the conservation, land management, and ecological restoration objectives defined for each landscape.



SENTINEL LANDSCAPES



Alaska

Joint Base
Lewis-McChord

Camp
Ripley

Southern
Indiana

Kittatinny
Ridge

Middle
Chesapeake

Potomac

Tidewater

Eastern
North Carolina

South Carolina
Lowcountry

Georgia

Avon Park
Air Force Range

Great
Salt Lake

Mojave
Desert

Fort
Huachuca

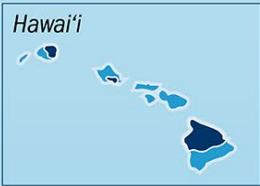
Eastern
New Mexico

Camp
Bullis

Northwest
Florida



Guam



Hawai'i

Hawai'i

SENTINEL LANDSCAPES

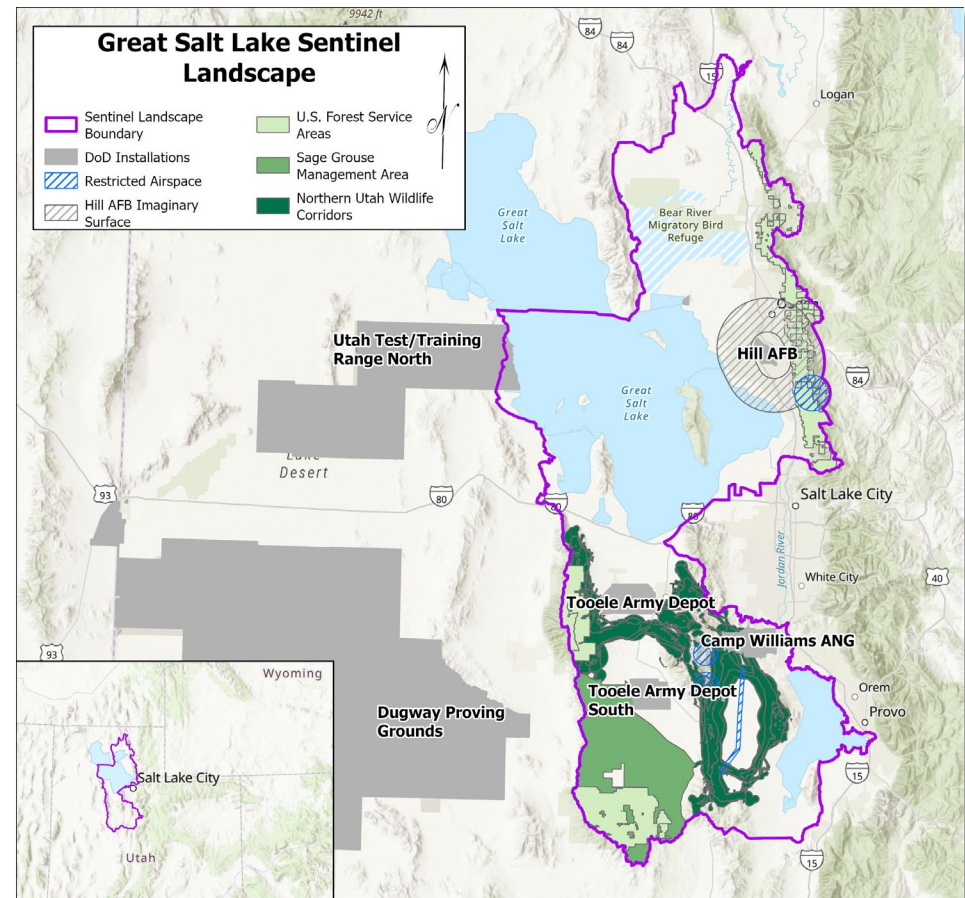


FEMA

The goals and objectives of each sentinel landscape are established by local partnerships that may include:

- Federal, state, and local government agencies
- Tribal governments
- Nonprofit organizations
- Academic institutions that represent relevant working lands, conservation, recreation, and landowner interests

Great Salt Lake Sentinel Landscape



Benefits to Military Installations

- Address encroachment threats across a broader area by leveraging multiple funding sources
- Coordinate actions across land management boundaries
- Align agencies priorities, funding, and actions across the region
- Ensure military has a voice in priorities and projects
- Improve coordinated planning for emergency events and future hazards





Federal Coordinating Committee (FCC)

- Coordinates the Sentinel Landscapes Partnership at the national level
- Comprised of representatives from the DOD, USFS, USFWS, NRCS, and FEMA
- Connects sentinel landscapes with voluntary federal and state conservation and resilience assistance programs
- Manages a biennial Sentinel Landscape Designation Cycle and designates new sentinel landscapes
- Sets annual strategic priorities for the Sentinel Landscapes Partnership

LegacyWorks Group

- Serves as support organization to the Sentinel Landscapes Partnership.
- Facilitates the Sentinel Landscapes Federal Coordinating Committee.
- Supports the sentinel landscape coordinators.
- Provides support services to sentinel landscapes, including planning, partnership development, communications, coaching, training.
- Manages funding for sentinel landscapes from multiple Federal agencies.
- Cultivates a collaborative network and community of practice across the Sentinel Landscapes Partnership, Federal agencies, and nonprofit partners.



2026 Designation Cycle Expression of Interest



2026 Designation Cycle Timeline

- Jan 13, 2025: Expression of Interest Released
- April 9, 2025: Expression of Interest Due (by 11:59 PM in your local time zone)
- Summer 2025: Applicants Selected to Submit Full Proposals
 - Selected applicants will have at least 60 business days to complete and submit their full proposal
- **February 2026: New Sentinel Landscapes Announced**

2026 Designation Cycle Eligibility

Any entity whose mission aligns with or supports the goals of the Sentinel Landscapes Partnership is eligible to apply. Examples include:

- Federal agencies
- State and local governments
- Federally Recognized Tribes
- Native Hawaiian Organizations, and other Indigenous Communities (including state-recognized tribes and Alaska Native Corporations)
- For-profit and not-for-profit organizations
- Municipal water treatment entities; water irrigation districts; and soil conservation districts



General Guidelines

- **Be sure to review the proposal guidance (linked on the “Apply Now” webpage on sentinellandscapes.org) before completing the expression of interest.**
- The expression of interest should be **no more than six pages** (not including cover page and map attachment).
- Answers should be typed in size 11 Times New Roman font. Please submit as a PDF.
- To help us manage file sizes, do not include additional attachments with your completed form besides a single map of your proposed boundary.
- We are not requesting letters of support. If your partnership has a compelling interest in submitting letters of support, do not submit them as attachments to your expression of interest. They must be submitted separately as PDFs to FCC@sentinellandscapes.org, clearly referencing what proposal they are related to.

1. Landscape Needs Statement

- Succinctly address the question, “Why do you want to be designated as a sentinel landscape?”
- Articulate what cannot already be accomplished in your landscape through existing processes and partnerships.



2. Military Mission

- All sentinel landscapes must include an anchor military installation or range **with an active REPI Program** whose mission requirements are impacted by encroachment or resilience challenges.
- REPI must be insufficient to fully address encroachment and resilience challenges.



3. Landscape Goals & Objectives

- Include an outline of landscape goals that support the local partnership's priorities and represent the initial development of a full implementation plan.
- Goals must reflect multiple sentinel landscape priorities from each FCC member agency.



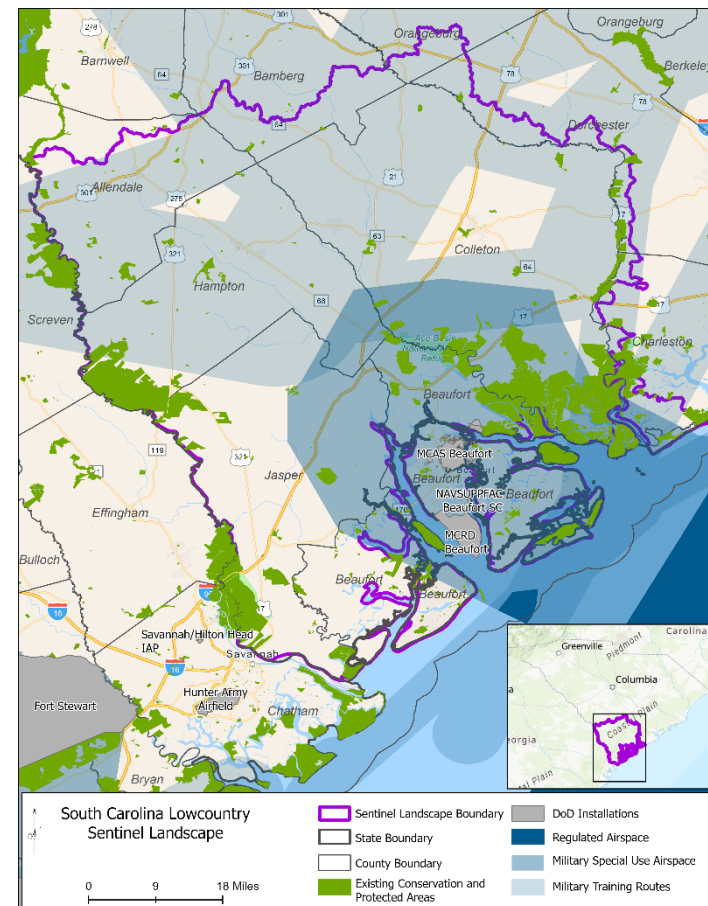
4. Landscape Governance

- Include a description of governance and decision-making structure for the local sentinel landscape partnership.
- Demonstrate that USDA, DOD, DOI, FEMA, state agencies, and non-governmental organizations will actively participate in the sentinel landscape, with descriptions about how each will contribute to specific actions that advance the partnership's goals (personnel, resources, etc.).



5. Landscape Boundary

- Appropriate size and scale to address partnership objectives that include encroachment threats, shared resource concerns, and landscape resilience priorities.
- Encompasses high-priority areas for USDA, DOD, DOI, and FEMA.
- Includes the anchor installation or range's military operational mission footprint, which will require close coordination with military leadership and key staff.
- Encompasses an existing REPI agreement area, or an area that is actively developing a REPI agreement.



6. Local Coordination

- What role will the sentinel landscape coordinator serve in the partnership's structure, and how will the additional capacity that the coordinator provides help achieve the landscape's goals?



SENTINEL LANDSCAPES



General inquiries: FCC@sentinellandscapes.org

Agency-specific questions:



DOI USFWS

Dan Schwarz: daniel_schwarz@fws.gov



USDA NRCS

Mark Defley: mark.defley@usda.gov



USDA USFS

Dan Goldeen daniel.goldeen@usda.gov



FEMA

FEMA

Amanda Sesser: amanda.sesser@fema.dhs.gov



DOD REPI

Jaime Simon: jaime.e.simon.civ@mail.mil

CC Allegra Wrocklage:

allegra.a.wrocklage.ctr@mail.mil

Expression of Interest Resources

Apply Now Webpage:
<https://sentinellandscapes.org/apply-now/>

Includes:

- Proposal Guidance
- Expression of Interest Form
- Help Session Recording
- Help Session Webinar PPT Slides



**Subscribe to the
Sentinel Landscapes
Partnership Listserv**