

# MIDDLE CHESAPEAKE SENTINEL LANDSCAPE

DELAWARE, MARYLAND, AND VIRGINIA | Est. 2015



The Chesapeake Bay is America's largest estuary spanning over 2.8 million acres. The ecosystem is valued for its natural beauty, economic productivity, and ecological vitality. It is also home to one of the U.S. Navy's premier aircraft testing locations, Naval Air Station (NAS) Patuxent River-Atlantic Test Ranges (ATR). The U.S. Navy conducts over 150,000 annual testing and research flights within its 1.5 million-acre special use airspace in the region. This averages out to more than 410 aircraft operations occurring per day. In 2015, a diverse group of stakeholders came together to form the Middle Chesapeake Sentinel Landscape. Despite the landscape's historic agricultural and fishing traditions, it is less than two hours driving distance from Washington, D.C., and is a coveted location for weekend or summer homes. This dynamic presents a challenge for the partners within the sentinel landscape, whose individual missions can conflict with unfettered development. The primary goal of the Middle Chesapeake Sentinel Landscape is to protect land that supports wildlife, agricultural productivity, and the U.S. Navy's mission.

## Landscape Goals



Protect working lands, wildlife habitat, and the military readiness of NAS Patuxent River by accelerating the rate of land conservation within the landscape.



Increase climate resilience to ensure the long-term sustainability of the environment, military readiness, agricultural and other natural resource-based industries, and local communities.



Collaborate with partners to optimize resources for conservation and restoration initiatives, promoting equity across the landscape through increased public access to protected lands and enhanced engagement with underserved landowners.



Enhance communication across the partnership to encourage collaboration, identify opportunities to leverage on-going efforts, and share knowledge of methods and techniques to increase effectiveness.



Scenic soybean field on the banks of the Patuxent River in Solomons, Maryland. (Photo by Preston Keres)

## LANDSCAPE DETAIL

Total Sentinel Landscape Area: **2,231,277** acres

Total Protected  
Acres:  
**59,881**

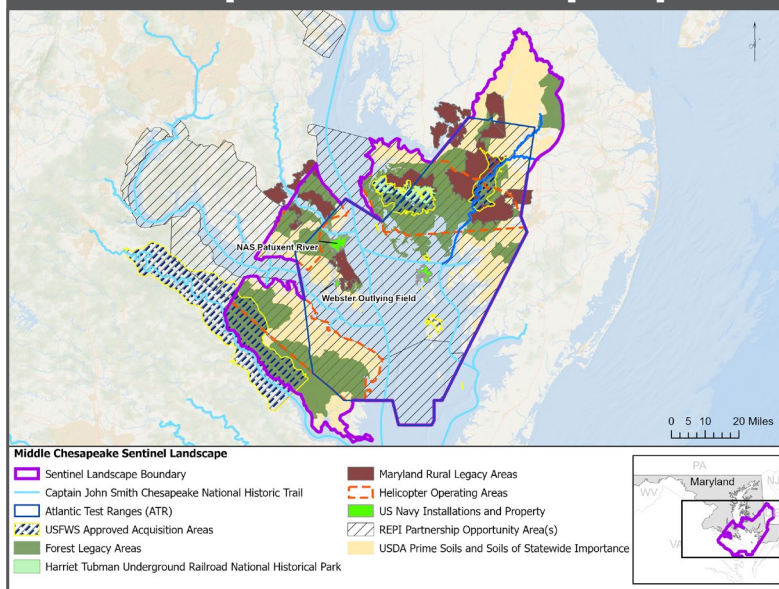
From year established  
through fiscal year 2022

Total Enrolled  
Acres:  
**67,625**

For fiscal year 2022

Active Base  
Area Acres:  
**7,640**

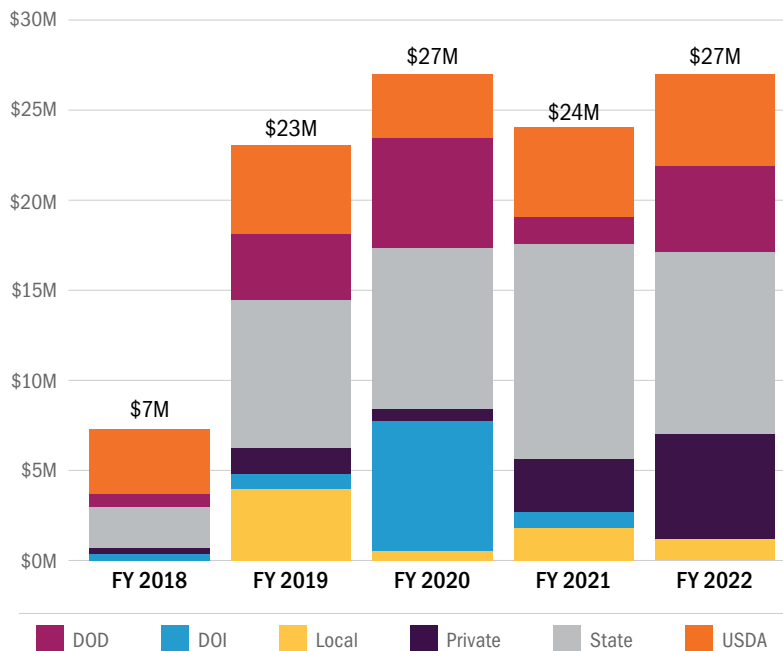
## Middle Chesapeake Sentinel Landscape Map



## Key Partners

- ▶ Chesapeake Conservancy
- ▶ Commonwealth of Virginia, Office the Secretary of Natural and Historic Resources
- ▶ Delaware Department of Agriculture
- ▶ Delaware Department of Natural Resource and Environmental Control
- ▶ Ducks Unlimited
- ▶ Eastern Shore Land Conservancy
- ▶ Environmental Finance Center, University of Maryland
- ▶ Lower Shore Land Trust
- ▶ Maryland Department of Agriculture
- ▶ Maryland Department of Natural Resources
- ▶ Maryland Environmental Trust
- ▶ Nanticoke River Watershed Conservancy
- ▶ Nanticoke Watershed Alliance
- ▶ Naval Air Station Patuxent River, Atlantic Test Ranges
- ▶ Northern Neck Land Conservancy
- ▶ St. Mary's County, Maryland
- ▶ U.S. Department of Agriculture, Forest Service
- ▶ U.S. Department of Agriculture, Natural Resource Conservation Service
- ▶ U.S. Department of Defense, Readiness and Environmental Protection Integration
- ▶ U.S. Department of the Interior, Fish and Wildlife Service, Chesapeake Bay Field Office
- ▶ U.S. Department of the Interior, National Park Service

## Middle Chesapeake Sentinel Landscape Total Funding by Partner



LANDSCAPE COORDINATOR CONTACT: Joanna Ogburn | [joanna@jboconservation.com](mailto:joanna@jboconservation.com)