

# KITTATINNY RIDGE SENTINEL LANDSCAPE

PENNSYLVANIA | Est. 2024



Located in central Pennsylvania’s Appalachian Mountains, the Kittatinny Ridge Sentinel Landscape is anchored by Fort Indiantown Gap (FTIG), one of the nation’s busiest National Guard training centers and the Army’s second most active heliport. As one of only three specialized Army National Guard aviation facilities, FTIG is critical in preparing warfighters and projecting military strength and capabilities in forward-deployed areas. The sentinel landscape encompasses forested ridges and fertile valleys that provide clean water and serve as a crucial corridor for rare wildlife and bird migration.

However, the region around FTIG is facing rapid development. Incompatible growth surrounding major highways decreases open space and increases light pollution, threatening FTIG’s ability to train under dark night skies. Noise complaints and development pressures impact specialized air and mission defense training and sensitive species, like the eastern regal fritillary butterfly and cerulean warbler.

With the primary mission of preserving military mission readiness, operations, testing, and training capabilities, partners in the Kittatinny Ridge Sentinel Landscape are focused on increasing coordinated and holistic land conservation, natural resource protection, and stewardship initiatives. In supporting these working lands, the sentinel landscape further supports local outdoor recreation and small-town economies.



Service members board a Pennsylvania Army National Guard CH-47 Chinook during airborne training at Fort Indiantown Gap, Pennsylvania. (Photo by Sgt. 1<sup>st</sup> Class Matthew Keeler)

## Landscape Goals



Safeguard natural lands around Fort Indiantown Gap to ensure training and operability at the busiest National Guard training center.



Preserve training missions and enhance readiness in the Kittatinny Ridge military corridor.



Increase coordinated and holistic land conservation, natural resource protection, and stewardship initiatives.



Support working lands productivity and economic development.



Improve nature-based recreational resources and access to sustain small-town economies.

## LANDSCAPE DETAIL

Total Sentinel Landscape Area: **1.9 million acres**

Total Protected  
Acres:

**0**

From year established  
through fiscal year 2024

Total Enrolled  
Acres:

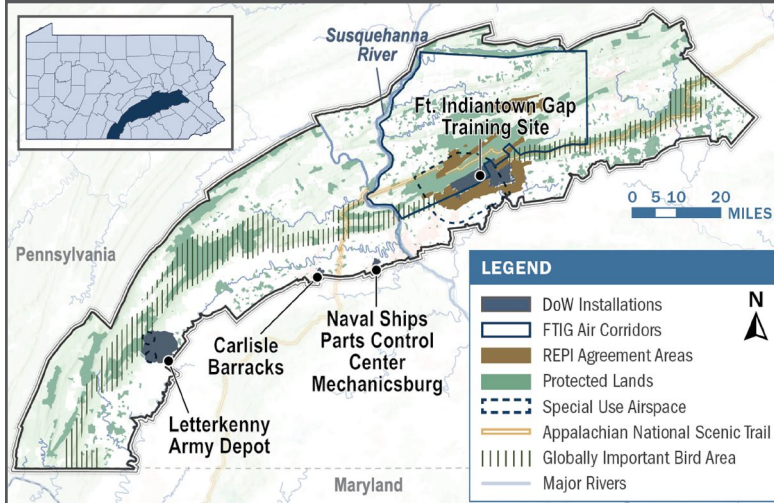
**0**

For fiscal year 2024

Active Base  
Area Acres:

**17,203**

## Kittatinny Ridge Sentinel Landscape Map



The Kittatinny Ridge is the gateway to Pennsylvania's Ridge and Valley Region.  
(Photo by KRCL)

## Key Partners

- ▶ Appalachian Trail Conservancy
- ▶ Audubon Mid-Atlantic
- ▶ Center for Land Use and Sustainability, Shippensburg University
- ▶ Hawk Mountain Sanctuary Association
- ▶ Kittatinny Ridge Conservation Landscape
- ▶ Letterkenny Army Depot
- ▶ Manada Conservancy
- ▶ Pennsylvania Department of Agriculture
- ▶ Pennsylvania Department of Community and Economic Development
- ▶ Pennsylvania Department of Conservation and Natural Resources
- ▶ Pennsylvania Department of Environmental Protection
- ▶ Pennsylvania Department of Military and Veterans Affairs
- ▶ Pennsylvania Department of Transportation
- ▶ Pennsylvania Fish and Boat Commission
- ▶ Pennsylvania Game Commission
- ▶ Pennsylvania Military Community Enhancement Commission
- ▶ Pennsylvania National Guard
- ▶ Pennsylvania Office of Outdoor Recreation
- ▶ The Lebanon Valley Conservancy
- ▶ The Nature Conservancy Pennsylvania/Delaware Chapter
- ▶ U.S. Department of Agriculture, Natural Resources Conservation Service – Pennsylvania
- ▶ U.S. Department of War, Chesapeake Bay Program
- ▶ U.S. Fish and Wildlife Service Northeast Region Science Applications
- ▶ U.S. Fish and Wildlife Service Public Affairs Field Office
- ▶ Ward Burton Wildlife Foundation



LANDSCAPE COORDINATOR CONTACT: Tanya Dierolf | [tanya@legacyworksgroup.com](mailto:tanya@legacyworksgroup.com)