

AVON PARK AIR FORCE RANGE SENTINEL LANDSCAPE

FLORIDA | Est. 2016



Located in south central Florida, the Avon Park Air Force Range Sentinel Landscape is known for its rich biodiversity and abundance of private ranches. The sentinel landscape is anchored by the U.S. Air Force's largest primary air-to-ground training range east of the Mississippi River, which has restricted airspace and an operating area used by every branch of the Armed Forces and multiple federal, state, and local agencies.

The sentinel landscape is also home to portions of the Everglades Headwaters National Wildlife Refuge and Conservation Area, one of the last remaining grassland and longleaf pine savanna landscapes in Eastern North America. The Refuge is not only a high-priority area for the Department of the Interior; it is also known by locals as an excellent destination for hunting, fishing, camping, hiking, birding, and outdoor educational opportunities. In 2016, local partners formed the Avon Park Air Force Range Sentinel Landscape to preserve the region's ecological assets and strengthen military readiness by helping private landowners manage their properties sustainably.



A cowboy rides out on a foggy morning to tend cattle on Arbuckle Creek Ranch. (Photo by Carlton Ward, Jr.)

Landscape Goals



Ensure the viability of agricultural lands through collaboration with partners and landowners.



Achieve conservation goals by leveraging partner expertise and funding to facilitate streamlined land protection efforts with willing landowners.



Create a natural pathway for imperiled species by connecting priority properties throughout the landscape.



Safeguard defense operations and community wellbeing by addressing resilience.



Protect and conserve water resources by buffering rivers, protecting aquifer recharge areas, and improving water quality.

LANDSCAPE DETAIL

Total Sentinel Landscape Area: **1,687,316** acres

Total Protected
Acres:
68,786

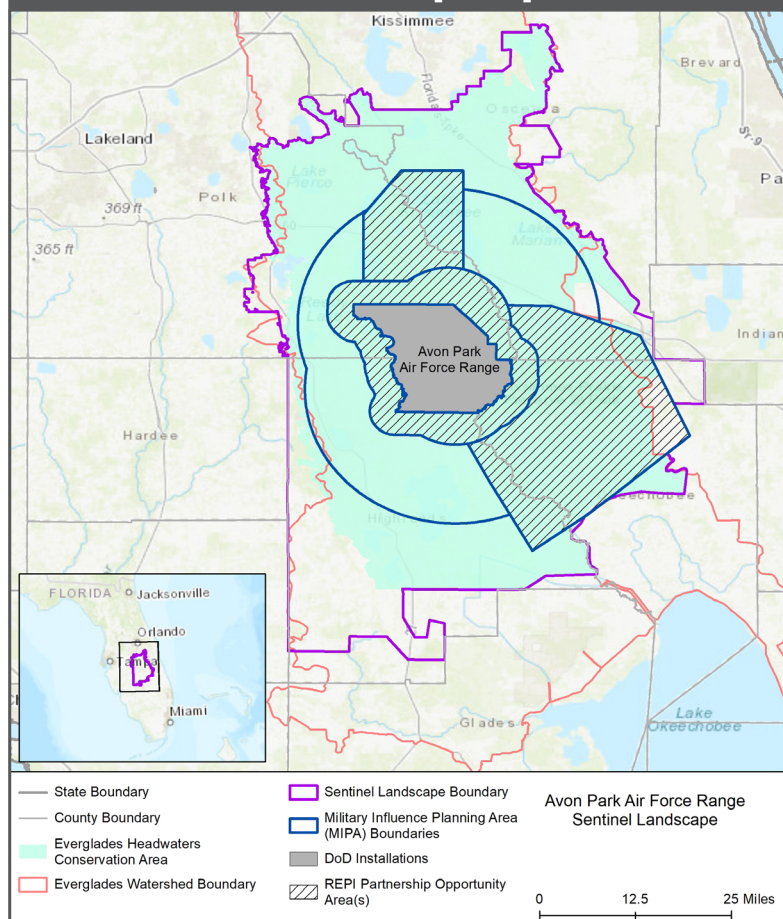
From year established
through fiscal year 2022

Total Enrolled
Acres:
41,338

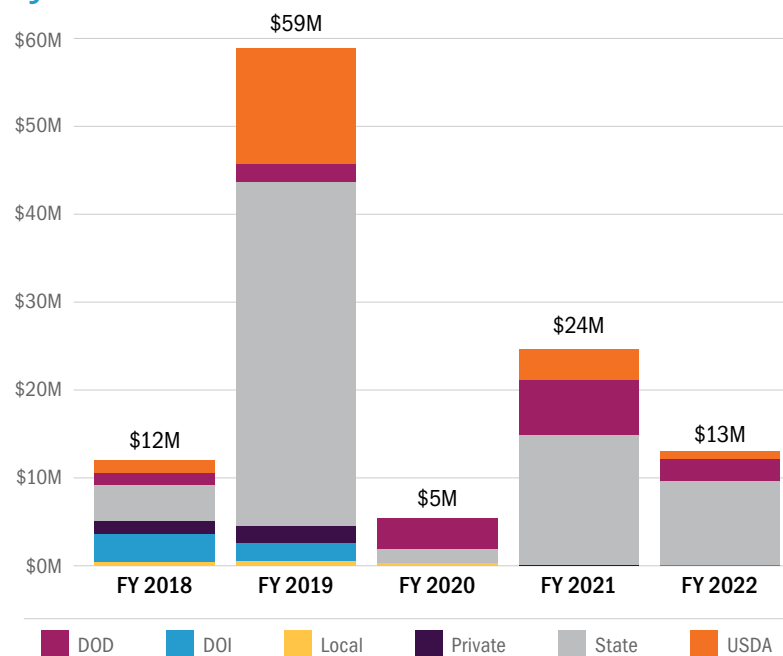
For fiscal year 2022

Active Base
Area Acres:
108,213

Avon Park Sentinel Landscape Map



Avon Park Sentinel Landscape Total Funding by Partner



Key Partners

- ▶ Archbold Biological Station
- ▶ Central Florida Regional Planning Council
- ▶ Cities of Avon Park, Frostproof, and Sebring
- ▶ Conservation Florida
- ▶ Conservation Fund
- ▶ Counties of Highlands, Polk, Okeechobee, and Osceola
- ▶ Everglades Headwaters National Wildlife Refuge and Conservation Area
- ▶ Florida Cattlemen's Association
- ▶ Florida Commerce
- ▶ Florida Defense Alliance
- ▶ Florida Departments of Agriculture and Consumer Services, Environmental Protection, and Transportation
- ▶ Florida Farm Bureau Federation
- ▶ Florida Fish and Wildlife Conservation Commission
- ▶ Florida Forest Service
- ▶ Highlands Soil & Water Conservation District
- ▶ National Wildlife Refuge Association
- ▶ Southeast Regional Partnership for Planning and Sustainability (SERPPAS)
- ▶ South Florida Water Management District
- ▶ Southwest Florida Water Management District
- ▶ The Florida Defense Support Task Force
- ▶ The Nature Conservancy
- ▶ U.S. Department of Agriculture, Farm Service Agency
- ▶ U.S. Department of Agriculture, Natural Resource Conservation Service
- ▶ U.S. Department of Defense, Office of Local Defense Community Cooperation
- ▶ U.S. Department of Defense, Readiness and Environmental Protection Integration
- ▶ U.S. Department of the Interior, Fish and Wildlife Service
- ▶ University of Florida's Center for Landscape Conservation Planning, Institute of Food and Agricultural Sciences, and Range Cattle Research and Education Center



LANDSCAPE COORDINATOR CONTACT: April DaSilva | avonpark@sentrillandscapes.org