

# CAMP RIPLEY

## SENTINEL LANDSCAPE

MINNESOTA | Est. 2016



Camp Ripley is a 53,000-acre regional collective training center with a mission to provide superior customer service, facilities, and resources to all military branches, as well as international partners, first responders, and civilian agencies. As the third busiest National Guard training site in the Nation, units from Illinois, Iowa, Minnesota, North Dakota, Ohio, South Dakota and Wisconsin rely on Camp Ripley to successfully accomplish their warfighter training missions.<sup>1</sup> Camp Ripley fosters positive community relations, delivering an annual economic impact of \$125,000,000 to local communities and employs over 800 people working to support the Minnesota National Guard.

Camp Ripley is located within a largely unfragmented landscape in Central Minnesota along the first 400 miles of the Mississippi River's headwaters and four of its major tributaries. Rural and working lands surrounding the installation enable Camp Ripley to fulfill its mission by providing a critical buffer from increasing encroachment. Residential development of farms, ranches, and forests may limit the timing, location, duration, and use of spectrum for military operations, reducing Camp Ripley's capability to provide a realistic training environment. Development also threatens one of the Midwest's richest ecological regions that provides habitat for wildlife protected under the Endangered Species Act and over 100 species of greatest conservation need.<sup>2</sup>

Intact rural and working lands provide important public benefits that bolster the local economy such as source and surface water protection, shoreline protection, open space, recreational opportunities for hunting and fishing, and commodity production. In 2015, the Minnesota legislature passed state statute [190.33](#) establishing the Camp Ripley Sentinel Landscape. Governor Mark Dayton signed the legislation to help identify and protect important national defense lands and their military missions. In 2016, Camp Ripley was designated as a federal Sentinel Landscape representing the formal partnership agreement between the U.S. Departments of Defense, Agriculture and Interior.



Soldiers conduct training exercises with a Chinook helicopter at Camp Ripley.

## Landscape Goals



Protect lands for the military mission of Camp Ripley while also protecting and enhancing working lands, natural resources, and habitat.



Restore and enhance private, public, and protected lands within the Camp Ripley Sentinel Landscape.



Coordinate targeted outreach of partnership programs available to private landowners.

## LANDSCAPE DETAIL

Total Sentinel Landscape Area: **804,557** acres

Total Protected  
Acres:

**37,973**

From year established  
through fiscal year 2023

Total Enrolled  
Acres:

**45,266**

For fiscal year 2023

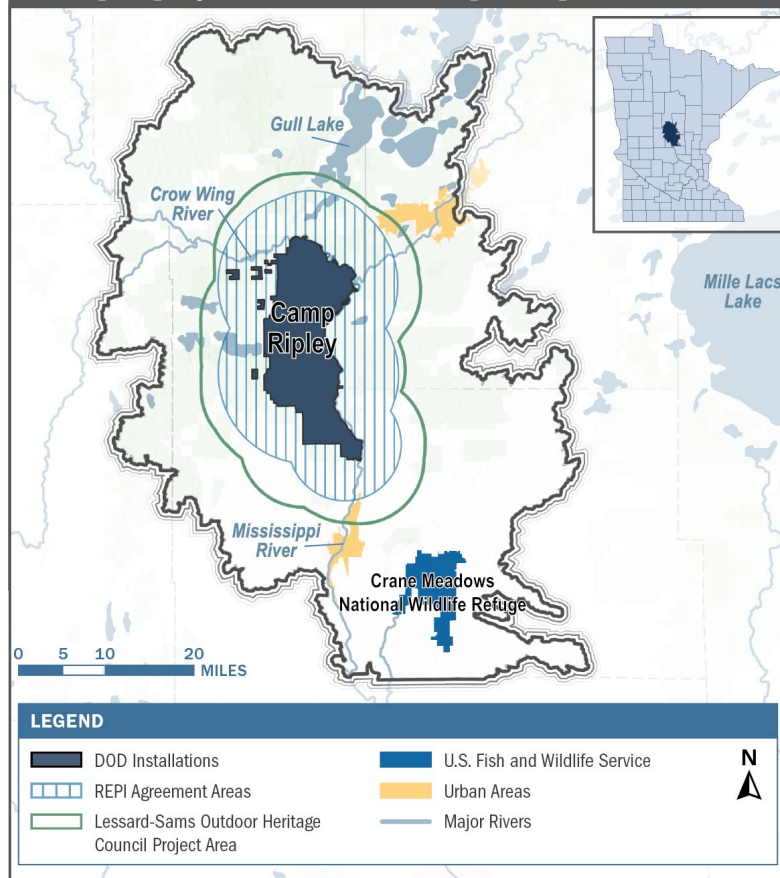
Active Base  
Area Acres:

**52,758**

<sup>1</sup> [https://minnesotanationalguard.ng.mil/wp-content/uploads/2025/01/2024-2025\\_MNNG\\_Annual\\_Report\\_web.pdf](https://minnesotanationalguard.ng.mil/wp-content/uploads/2025/01/2024-2025_MNNG_Annual_Report_web.pdf)

<sup>2</sup> <https://storymaps.arcgis.com/stories/eb42e98753e741f99957c61ccd56cc0d>

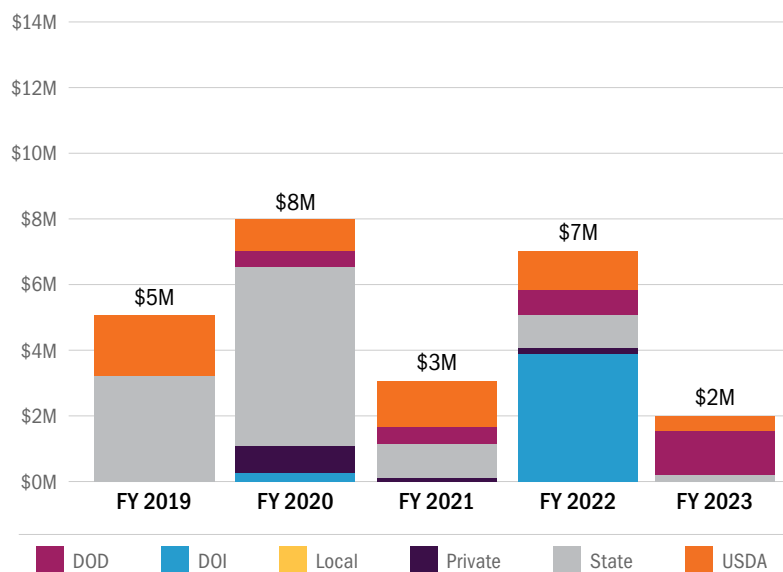
## Camp Ripley Sentinel Landscape Map



## Key Partners

- City of Baxter
- Crow Wing County
- Crow Wing Soil and Water Conservation District
- Great River Greening
- Minnesota Board of Water and Soil Resources
- Minnesota Department of Agriculture
- Minnesota Department of Military Affairs
- Minnesota Department of Natural Resources
- Minnesota Forest Resources Council
- Minnesota Pollution Control Agency
- Mississippi Headwaters Board
- Morrison County
- Morrison Soil and Water Conservation District
- Sylvan Township (Cass County)
- The Conservation Fund
- The Nature Conservancy
- U.S. Army National Guard
- U.S. Department of Agriculture, Farm Service Agency
- U.S. Department of Agriculture, Forest Service
- U.S. Department of Agriculture, Natural Resource Conservation Service
- U.S. Department of Defense, Army Compatible Use Buffer Program
- U.S. Department of Defense, Readiness and Environmental Protection Integration
- U.S. Department of the Interior, Fish and Wildlife Service
- U.S. Department of the Interior, National Park Service

## Camp Ripley Sentinel Landscape Total Funding by Partner



Soldiers with the 200<sup>th</sup> Engineer Company in the 153<sup>rd</sup> Engineer Battalion from the South Dakota Army National Guard conduct Wet-Gap crossing training in joint with the 1<sup>st</sup> General Support Aviation Battalion, 171<sup>st</sup> Aviation Regiment with the 34<sup>th</sup> Combat Aviation Brigade, Minnesota Army National Guard, across the Mississippi River at Camp Ripley Training Center. (Minnesota National Guard Photo by Army Staff Sgt. Jorden Newbanks)



### LANDSCAPE COORDINATOR CONTACTS:

Kayli Overland | Camp Ripley Sentinel Landscape Coordinator  
kayli@legacyworksgroup.com

Raenah Bailey | Midwest Resiliency Specialist  
raenah@legacyworksgroup.com