

EASTERN NEW MEXICO SENTINEL LANDSCAPE

NEW MEXICO | Est. 2024



In 2024, a coalition of partners united around a shared vision of safeguarding declining water supply and protecting natural resources to create the Eastern New Mexico Sentinel Landscape. This region boasts vast expanses of private ranches and farmlands as well as Cannon Air Force Base (AFB), home to the 27th Special Operations Wing (SOW). Cannon AFB SOW encompasses the 26th Special Tactics Squadron, 43rd Intelligence Squadron, and approximately 5,100 active military and civilian personnel, 2,400 Department of Defense and installation contractors, five material design series platforms, and all of the Melrose Air Force Range.

Climate-induced warming and aridification are intensifying water scarcity across the Eastern New Mexico Sentinel Landscape. This has magnified the strain on the dwindling groundwater reserves of the Ogallala Aquifer, the sole source of domestic water for Cannon AFB and most of the surrounding landscape. Heightened demand coupled with the aquifer's slow rate of recharge has underscored the urgent need for action by all local stakeholders to address challenges posed by limited water availability to agricultural viability, rare species, critical habitats, and natural resources. The development of wind farms also threatens vital military operation areas.



Military Training CAFB-MAFR NM Special Operations Training. (Photo by Airman 1st Class Alexis Pons Abascal)

Landscape Goals



Sustain installation and community resilience by mitigating the impacts of intensive agriculture, climate change, and declining water supply.



Enhance climate resilience and wildlife habitats by boosting groundwater recharge, promoting grasslands, and restoring playas.



Promote agricultural vibrance by protecting working lands, supporting local viability, and advancing innovation for sustainable farming.



Empower local stakeholders through comprehensive education, training, and capacity building.

LANDSCAPE DETAIL

Total Sentinel Landscape Area: **2,445,412** acres

Total Protected
Acres:

0

From year established
through fiscal year 2023

Total Enrolled
Acres:

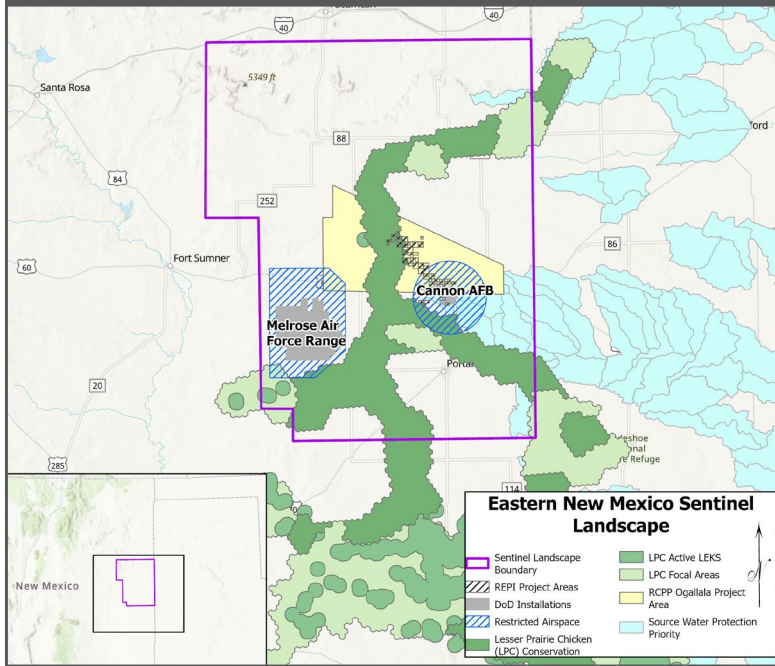
0

For fiscal year 2023

Active Base
Area Acres:

74,127

Eastern New Mexico Sentinel Landscape Map



U.S. Air Force Airmen assigned to the 27th Special Operations Wing remotely pilot a Small Unmanned Aerial System in a simulated deployed environment during Exercise Talon Spear at Melrose Air Force Range, NM. (Photo by Senior Airman Alexcia Givens)

Key Partners

- ▶ Cannon Air Force Base and Melrose Air Force Range
- ▶ Central Curry Soil & Water Conservation District
- ▶ City of Clovis, New Mexico
- ▶ Curry County New Mexico
- ▶ New Mexico Association of Conservation Districts
- ▶ New Mexico Bureau of Geology & Mineral Resources
- ▶ New Mexico Department of Agriculture
- ▶ New Mexico Department of Game and Fish
- ▶ New Mexico Environment Department
- ▶ New Mexico Environment, Minerals and Natural Resources Department
- ▶ New Mexico Forestry Division
- ▶ New Mexico Interstate Stream Commission
- ▶ New Mexico Natural Resources Conservation Service
- ▶ New Mexico Office of the State Engineer
- ▶ New Mexico State Land Office,
- ▶ Ogallala Land & Water Conservancy
- ▶ Playa Lakes Joint Venture
- ▶ Roosevelt Soil & Water Conservation District
- ▶ Soil for Water (National Center for Appropriate Technology)
- ▶ Texas Agricultural Land Trust
- ▶ The Conservation Fund
- ▶ Thornburg Foundation
- ▶ U.S. Air Force
- ▶ U.S. Department of Agriculture, Farm Service Agency
- ▶ U.S. Department of Agriculture, Natural Resources Conservation Service
- ▶ U.S. Department of Defense, Readiness and Environmental Protection Integration
- ▶ U.S. Department of the Interior, Fish and Wildlife Service



LANDSCAPE COORDINATOR CONTACT: Ladona Clayton | ladona.clayton@ogalwc.org