

NORTHWEST FLORIDA SENTINEL LANDSCAPE

FLORIDA | Est. 2022



Situated in Florida’s panhandle, the unique coastal geography of the Northwest Florida Sentinel Landscape contains rural and agricultural lands, iconic longleaf pine forests, and threatened and endangered species habitat. The landscape is also home to nine military installations and ranges: Eglin Air Force Base, Tyndall Air Force Base, Naval Air Station Pensacola, Naval Air Station Whiting Field, Naval Support Activity Panama City, Eglin Gulf Test and Training Range, Hurlburt Field, Saufley Field, and Corry Station. These installations are integral to military training, weapons testing, special operations, joint cyber warfare, and aviation pilot training for the Air Force, Navy, Marine Corps, and Coast Guard. The coastal installations in Northwest Florida are ideally located with direct access to special use airspace over the Eglin Gulf Test and Training Range for testing and training.

In addition to high-priority military operations areas and restricted airspace, the landscape contains the Apalachicola National Forest, Blackwater River State Forest, St. Marks and St. Vincent National Wildlife Refuges, Gulf Islands National Seashore and the congressionally designated Florida National Scenic Trail. These public lands provide public recreation opportunities and habitat for Federal and state listed threatened and endangered species such as the red cockaded woodpecker, gopher tortoise, Eastern indigo snake, and frosted and reticulated flatwoods salamanders.

In 2022, a coalition of local, regional, state, and Federal partners came together to establish the Northwest Florida Sentinel Landscape Partnership to sustain the military missions, improve regional sustainability, retain working agriculture and forestry lands, and protect natural resources and endangered species. The partnership was built on existing efforts in the region and continues to advance shared goals in adjacent, unprotected areas.



U.S. Army Ranger students paddle in rubber boats across a lake during the swamp training phase at Camp Rudder on Eglin Air Force Base, Florida. (DoW photo by John D. Helms, U.S. Army.)

Landscape Goals



Retain working agriculture and forestry lands as compatible, resilient, and sustainable land uses that support the evolving military missions of NWFSL installations and enhance wildlife habitat.



Increase the resilience and sustainability of natural systems by conserving and restoring habitat and water resources with an emphasis on listed species recovery, prescribed fire, water quality, and water quantity.



Identify, implement, and accelerate collaborative projects to enhance resilience to protect military missions, community infrastructure, and habitats.

LANDSCAPE DETAIL

Total Sentinel Landscape Area: 7,883,979 acres

Total Protected Acres:
56,679

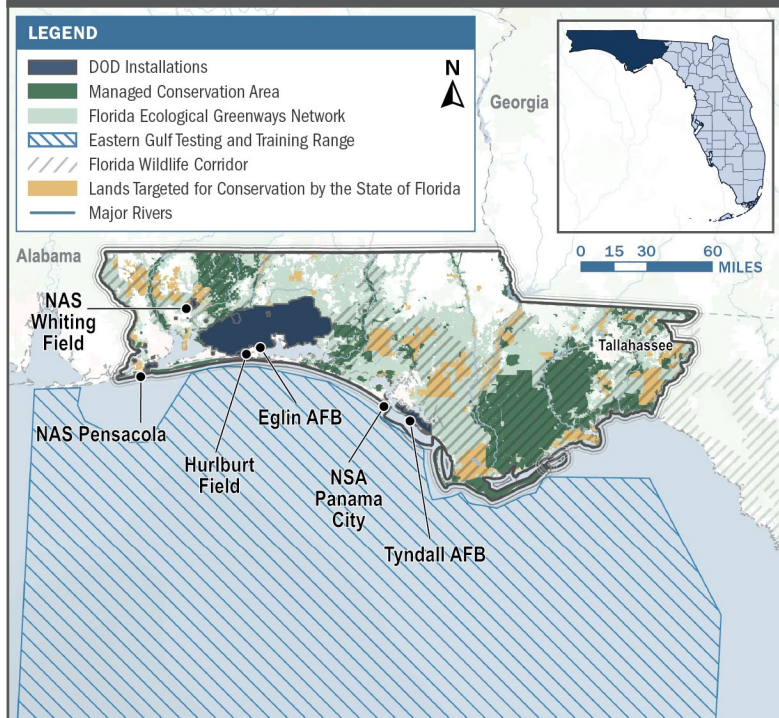
From year established through fiscal year 2024

Total Enrolled Acres:
100,851

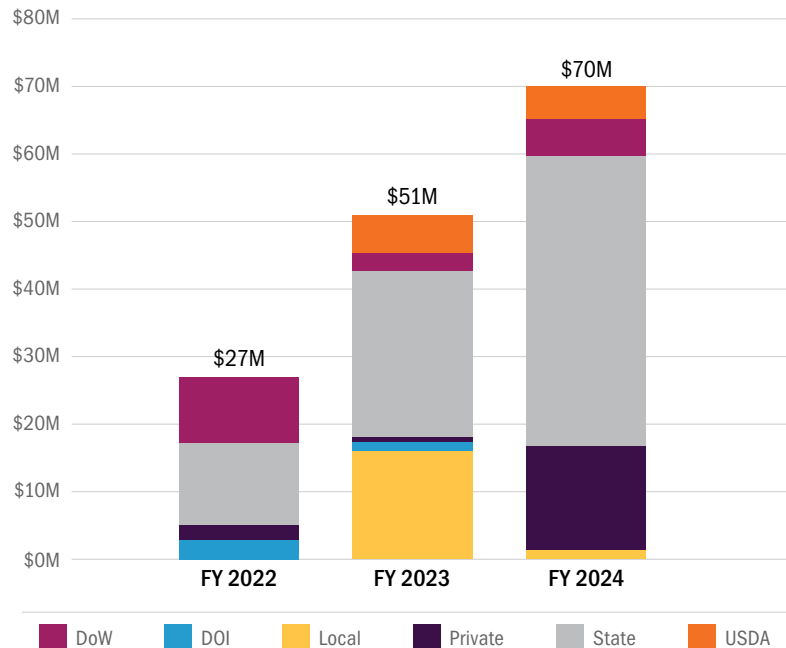
For fiscal year 2024

Active Base Area Acres:
108,213

Northwest Florida Sentinel Landscape Map



Northwest Florida Sentinel Landscape Total Funding by Partner



Key Partners

- ▶ Apalachee Regional Planning Council
- ▶ Apalachicola Regional Stewardship Alliance
- ▶ Atlanta Botanical Garden
- ▶ Bay Defense Alliance
- ▶ Choctawhatchee Bay Estuary Program
- ▶ Conservation Florida
- ▶ Defenders of Wildlife
- ▶ FloridaCommerce
- ▶ Department of Environmental Protection
- ▶ Emerald Coast Regional Council
- ▶ Florida A&M University – Florida State University College of Engineering – Resilient Infrastructure and Disaster Response Center
- ▶ Florida Defense Alliance
- ▶ Florida Defense Support Commission
- ▶ Florida Department of Agriculture and Consumer Services
- ▶ Florida Fish and Wildlife Conservation Commission
- ▶ Florida Trail Association
- ▶ Gulf Coastal Plain Ecosystem Partnership – Longleaf Alliance
- ▶ Nokuse Land Conservancy and Nokuse Plantation
- ▶ Northwest Florida Water Management District
- ▶ Pensacola and Perdido Bays Estuary Program
- ▶ St. Andrew & St. Joesph Bays Estuary Program
- ▶ Escambia, Santa Rosa, Okaloosa and Walton Counties
- ▶ Suwannee River Water Management District
- ▶ Tall Timbers Land Conservancy
- ▶ The Conservation Fund
- ▶ The Nature Conservancy
- ▶ The Trust for Public Land
- ▶ Tri-County Defense Support Initiative
- ▶ U.S. Air Force – Air Force Civil Engineer Center, Eglin Air Force Base, Hurlburt Field, Tyndall Air Force Base
- ▶ U.S. Department of Agriculture – Forest Service
- ▶ U.S. Department of Agriculture – Natural Resources Conservation Service
- ▶ U.S. Department of War
- ▶ U.S. Department of the Interior – Fish and Wildlife Service
- ▶ U.S. Navy – Naval Air Station Pensacola, Whiting Field, Naval Support Activity Panama City
- ▶ West Florida Defense Alliance



LANDSCAPE COORDINATOR CONTACT: Kent L. Wimmer, AICP | kwimmer@defenders.org