

MOJAVE DESERT SENTINEL LANDSCAPE

CALIFORNIA | Est. 2024



The Mojave Desert Sentinel Landscape in California covers 3.5 million acres of the western Mojave Desert and is home to the Marine Corps Air Ground Combat Center, National Training Center Fort Irwin, Edwards Air Force Base, Naval Air Weapons Station China Lake, and Marine Corps Logistics Base Barstow.

These military bases require off-installation land and airspace to test, transit, and train current and next-generation capabilities. However, this region is increasingly challenged by development pressures that pose significant threats to military operations, including airspace congestion, limited access to training routes, unauthorized off-road vehicle use, and energy development.

To address these challenges, the Mojave Desert Sentinel Landscape brings together a diverse group of state, local, Federal, tribal, and private partners focused on reducing land use conflicts that impact military readiness. They are working collaboratively to reclaim and rehabilitate up to 50,000 acres of priority habitats and mitigate the growing impacts of wildfires, drought, and heat. Their efforts to protect priority habitats also decrease the regulatory burden on military testing and training and improve installation resilience by supporting natural landscapes that are more drought and fire resilient.

Landscape Goals



Protect the five military installations and surrounding areas to prevent encroachment and safeguard the training airspace.



Reclaim and rehabilitate priority habitats by supporting strategic land protection, wildfire restoration, and rehabilitation of up to 50,000 acres.



Reduce and mitigate impacts from illegal activities, such as unauthorized off-highway vehicle use, and illegal cannabis grows.



Develop sustainable, resilient seed propagation agricultural practices and seed growing cooperatives.



Soldiers assigned to 3rd Armored Brigade Combat Team, 1st Armored Division discuss their next training mission at Fort Irwin, California during rotation 18-08 the National Training Center. (U.S. Army photo by 1st Lt. Sean Kealey)

LANDSCAPE DETAIL

Total Sentinel Landscape Area: **3,539,077** acres

Total Protected
Acres:
0

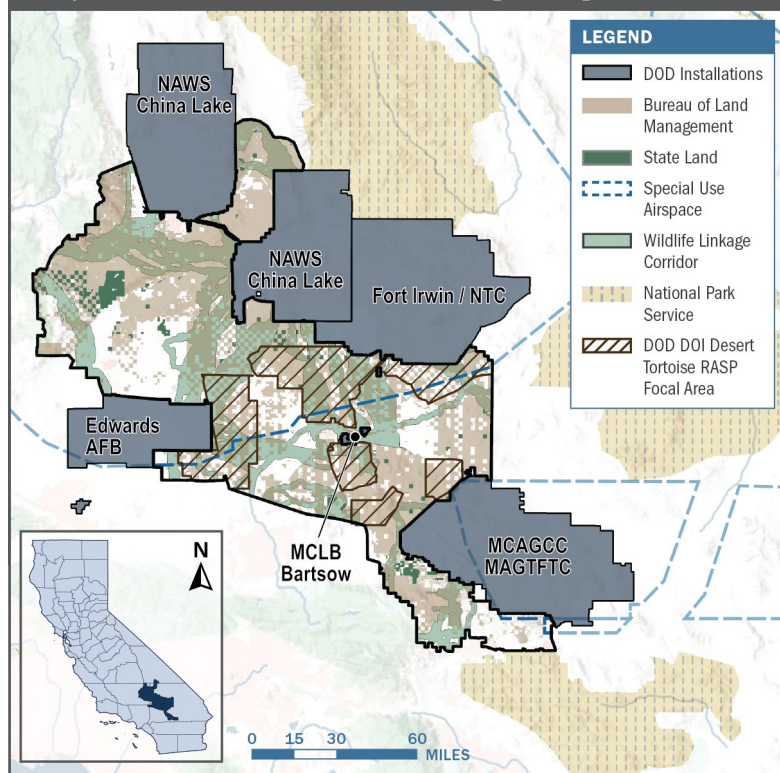
From year established
through fiscal year 2023

Total Enrolled
Acres:
0

For fiscal year 2023

Active Base
Area Acres:
364

Mojave Desert Sentinel Landscape Map



A UH-60 Blackhawk helicopter sits under Milky Way galaxy in the Mojave Desert, at the National Training Center, Fort Irwin, California. (Photo by Mississippi National Guard Staff Sgt. Tim Morgan, 102nd Public Affairs Detachment)

Key Partners

- ▶ BLM Seeds of Success
- ▶ California Department of Fish and Wildlife
- ▶ California Natural Resources Agency
- ▶ California State Parks
- ▶ Caltrans
- ▶ Death Valley National Park
- ▶ Desert Manager's Group
- ▶ Desert Tortoise Council
- ▶ Desert Tortoise Recovery Office
- ▶ Department of the Interior Bureau of Land Management, California Desert District
- ▶ Eastern Kern County Resource Conservation District
- ▶ Edwards Air Force Base
- ▶ Joshua Tree National Park
- ▶ Marine Corps Air Ground Combat Center
- ▶ Marine Corps Logistics Base Barstow
- ▶ Mojave Desert Land Trust
- ▶ Mojave Desert Resource Conservation District
- ▶ Mojave National Preserve
- ▶ National Fish and Wildlife Foundation
- ▶ National Training Center Fort Irwin, U.S. Army
- ▶ Native American Land Conservancy
- ▶ Naval Air Weapons Station China Lake
- ▶ Preservation Ranch
- ▶ San Bernardino County
- ▶ State Lands Commission
- ▶ Transition Habitat Conservancy
- ▶ Trust for Public Land
- ▶ U.S. Department of Agriculture, Natural Resources Conservation Service
- ▶ U.S. Forest Service
- ▶ U.S. Geological Survey, Western Ecological Research Center
- ▶ University of California Los Angeles
- ▶ University of California Riverside
- ▶ Wildlife Conservation Board



LANDSCAPE COORDINATOR CONTACT: Stephanie Dashiell | stephanie@legacyworksgroup.com