

MIDDLE CHESAPEAKE SENTINEL LANDSCAPE

DELAWARE, MARYLAND, AND VIRGINIA | Est. 2015



The Middle Chesapeake Sentinel Landscape spans over two million acres across the lower Chesapeake Bay in Maryland, Virginia, and Delaware. It is home to Naval Air Station (NAS) Patuxent River-Atlantic Test Ranges, one of the U.S. Navy's premier aircraft testing locations. Each year, the U.S. Navy conducts over 150,000 testing and research flights within its 1.5-million-acre special use airspace in the region. The surrounding ecosystem is equally valued for its natural beauty, economic productivity, and ecological vitality, and it includes a portion of America's largest estuary, the Chesapeake Bay.

Despite the landscape's historically agricultural and fishing-based economy, its location makes it an increasingly attractive area for residential and vacation home development. This growing demand presents a challenge for the partners within the sentinel landscape, whose individual missions can conflict with unfettered development. As a result, in 2015, a group of stakeholders formed the Middle Chesapeake Sentinel Landscape to enhance land protection and restoration efforts across the region to support military readiness, working and natural lands, and resilient communities and ecosystems. Since its inception, the MCSL has grown from an initial group composed of Federal agency partners to include representatives from 40 different organizations and agencies.



NAS Patuxent River and the Atlantic Test Ranges is an important testing location for all Navy aircraft, such as the F-35.

Landscape Goals



Advance opportunities to restore and enhance habitat to prevent on-installation restrictions and conserve at-risk species.



Protect working lands, wildlife habitat, and NAS Patuxent River's military readiness by promoting land use compatible with the military mission.



Ensure the long-term sustainability of the environment, military readiness, local economies, and agricultural and natural resource-based industries.



Collaborate with partners to optimize resources for conservation and restoration initiatives, while increasing public access to protected lands and enhancing engagement with landowners.



Enhance communication across the partnership to encourage collaboration, identify opportunities to leverage on-going efforts, and share knowledge of methods and techniques to increase effectiveness.

LANDSCAPE DETAIL

Total Sentinel Landscape Area: **2,231,277** acres

Total Protected
Acres:
70,991

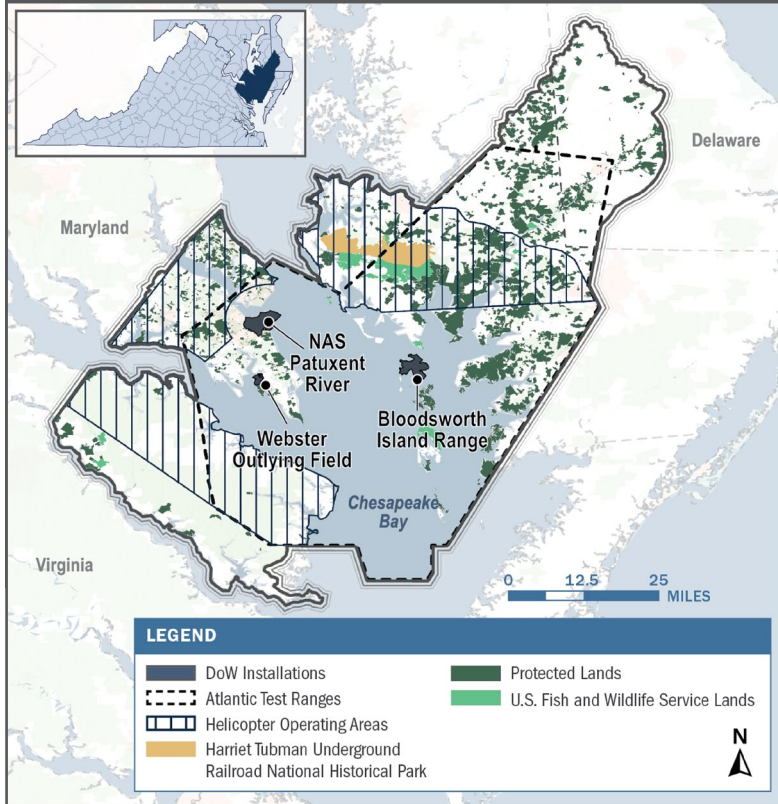
From year established
through fiscal year 2024

Total Enrolled
Acres:
27,998

For fiscal year 2024

Active Base
Area Acres:
7,640

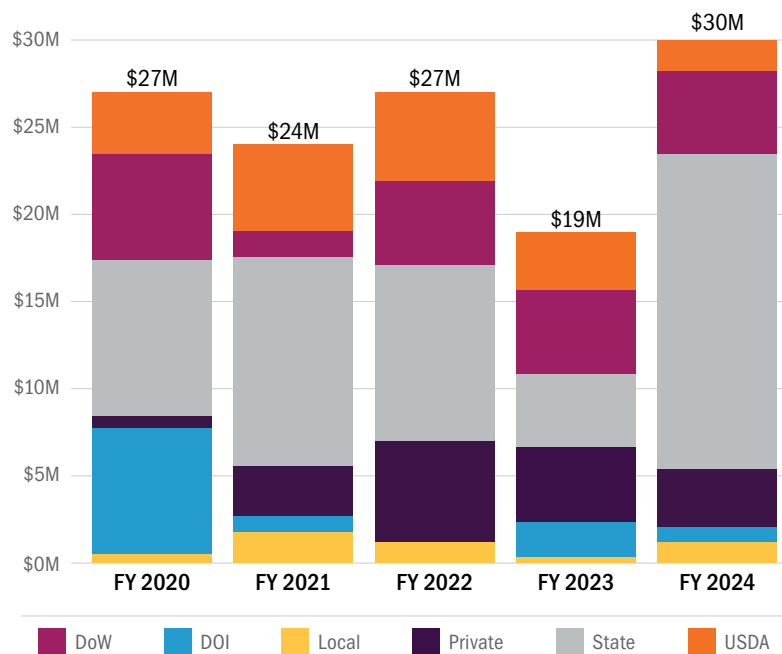
Middle Chesapeake Sentinel Landscape Map



Key Partners

- ▶ Calvert County, Maryland
- ▶ Calvert Nature Society
- ▶ Chesapeake Conservancy
- ▶ Cove Point Natural Heritage Trust
- ▶ Delaware Department of Agriculture
- ▶ Delaware Department of Natural Resource and Environmental Control
- ▶ Ducks Unlimited
- ▶ Eastern Shore Land Conservancy
- ▶ Lower Shore Land Trust
- ▶ Maryland Department of Agriculture
- ▶ Maryland Department of Natural Resources
- ▶ Maryland Environmental Trust
- ▶ Nanticoke River Watershed Conservancy
- ▶ Nanticoke Watershed Alliance
- ▶ Naval Air Station Patuxent River, Atlantic Test Range
- ▶ Naval Air Warfare Center Aircraft Division (NAWCAD)
- ▶ Naval Facilities Engineering Systems Command (NAVFAC)
- ▶ Northern Neck Land Conservancy
- ▶ Patuxent Tidewater Land Trust
- ▶ Southern Maryland Resource Conservation & Development Board
- ▶ St. Mary's County, Maryland
- ▶ The Conservation Fund
- ▶ The Nature Conservancy
- ▶ Trust for Public Land
- ▶ U.S. Department of Agriculture, Forest Service
- ▶ U.S. Department of Agriculture, Natural Resources Conservation Service
- ▶ U.S. Department of the Interior, Fish and Wildlife Service
- ▶ U.S. Department of the Interior, National Park Service
- ▶ U.S. Department of War, Readiness and Environmental Protection Integration
- ▶ Virginia Department of Conservation and Recreation
- ▶ Virginia Department of Wildlife Resources
- ▶ Virginia Outdoors Foundation

Middle Chesapeake Sentinel Landscape Total Funding by Partner



LANDSCAPE COORDINATOR CONTACT: Joanna Ogburn | joanna@jboconservation.com