

# AVON PARK AIR FORCE RANGE SENTINEL LANDSCAPE

FLORIDA | Est. 2016



Located in south central Florida between Orlando and Lake Okeechobee, the Avon Park Air Force Range Sentinel Landscape is part of the headwaters of the Everglades watershed, containing some of the oldest natural habitats and most biodiverse lands in the state. The sentinel landscape is anchored by the U.S. Air Force's largest primary air-to-ground training range east of the Mississippi River, used by every branch of the Armed Forces and multiple federal, state, and local agencies.

The landscape is known for its rich biodiversity and abundance of private ranches; containing the Everglades Headwaters National Wildlife Refuge and Conservation Area, a priority of the Department of Interior and one of the last remaining grassland and longleaf pine savanna landscapes in Eastern North America, and the Lake Wales Ridge, home to one of Florida's most productive aquifers, supplying water to more than 1 million people. In 2016, local partners formed the Avon Park Air Force Range Sentinel Landscape to protect the region's natural resources, support agricultural working lands, strengthen military readiness, and provide educational and recreational opportunities while contributing to Florida's economy.



The Avon Park Air Force Range Sentinel Landscape contains a significant portion of the Florida Wildlife Corridor, home to many threatened and endangered species. The award-winning film *Path of the Panther* was filmed throughout the sentinel landscape and tells the story of the Florida panther, the last big cat surviving in the eastern U.S., and the fight to save its Everglades home. (Photo by Carlton Ward, Jr.)

## Landscape Goals



Ensure the viability of agricultural lands through collaboration with partners and landowners.



Achieve conservation goals by leveraging partner expertise and funding to facilitate streamlined land protection efforts with willing landowners.



Create a natural pathway for imperiled species by connecting priority properties throughout the landscape.



Safeguard defense operations and community wellbeing by addressing resilience.



Protect and conserve water resources by buffering rivers, protecting aquifer recharge areas, and improving water quality.

## LANDSCAPE DETAIL

Total Sentinel Landscape Area: **1,687,316** acres

Total Protected  
Acres:  
**68,786**

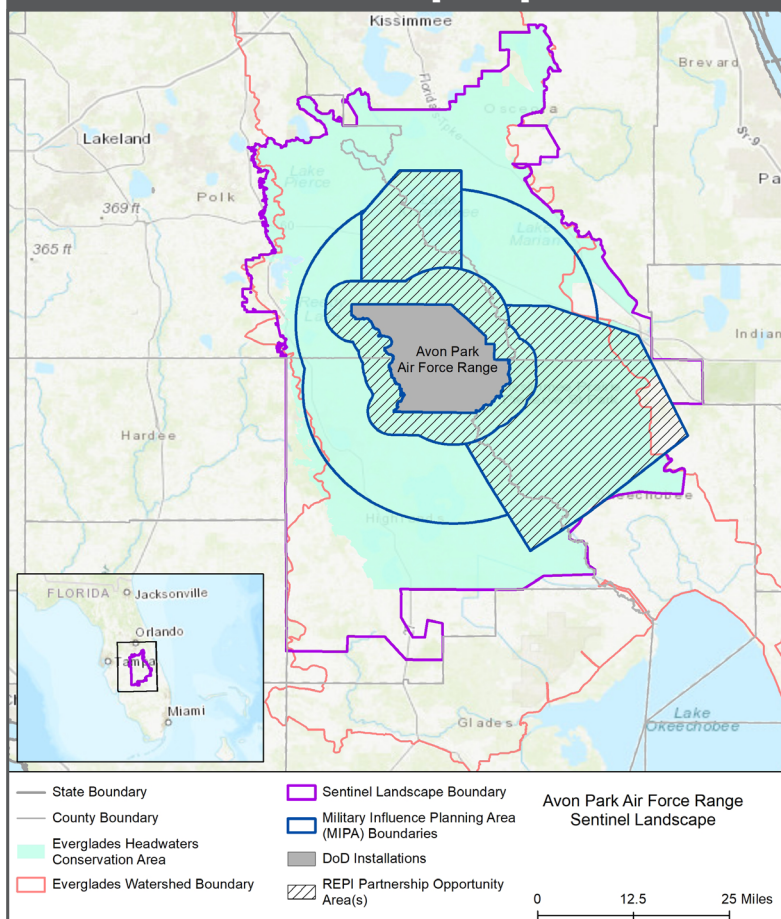
From year established  
through fiscal year 2022

Total Enrolled  
Acres:  
**41,338**

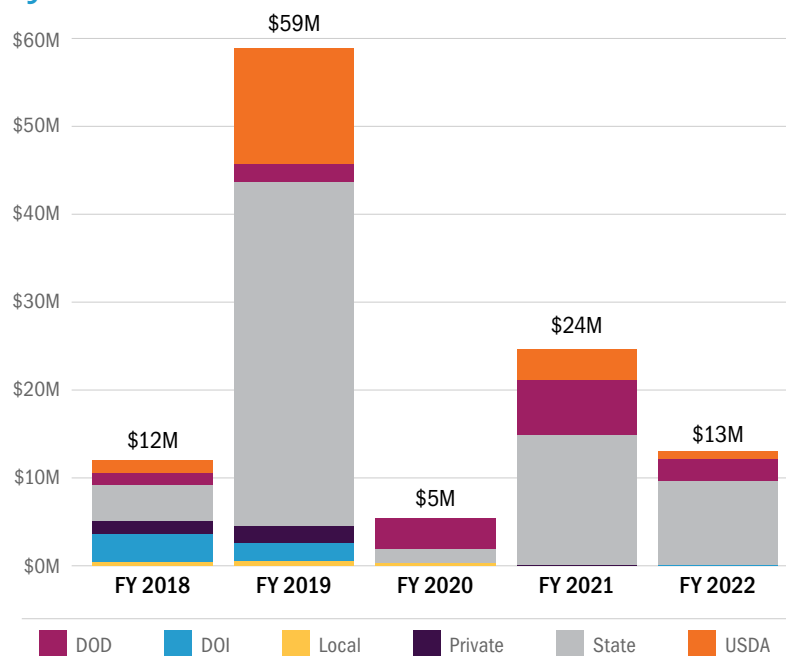
For fiscal year 2022

Active Base  
Area Acres:  
**108,213**

## Avon Park Sentinel Landscape Map



## Avon Park Sentinel Landscape Total Funding by Partner



## Key Partners

- ▶ Archbold Biological Station
- ▶ Central Florida Regional Planning Council
- ▶ Cities of Avon Park, Frostproof, and Sebring
- ▶ Conservation Florida
- ▶ Conservation Fund
- ▶ Counties of Highlands, Polk, Okeechobee, and Osceola
- ▶ Everglades Headwaters National Wildlife Refuge and Conservation Area
- ▶ Florida Audubon
- ▶ Florida Cattlemen's Association
- ▶ Florida Commerce
- ▶ Florida Defense Alliance
- ▶ Florida Departments of Agriculture and Consumer Services, Environmental Protection, and Transportation
- ▶ Florida Ducks Unlimited
- ▶ Florida Farm Bureau Federation
- ▶ Florida Fish and Wildlife Conservation Commission
- ▶ Florida Forest Service
- ▶ Highlands Soil & Water Conservation District
- ▶ National Wildlife Refuge Association
- ▶ Southeast Regional Partnership for Planning and Sustainability (SERPPAS)
- ▶ South Florida Water Management District
- ▶ Southwest Florida Water Management District
- ▶ The Florida Defense Support Task Force
- ▶ The Nature Conservancy
- ▶ U.S. Department of Agriculture, Farm Service Agency
- ▶ U.S. Department of Agriculture, Natural Resource Conservation Service
- ▶ U.S. Department of Defense, Office of Local Defense Community Cooperation
- ▶ U.S. Department of Defense, Readiness and Environmental Protection Integration
- ▶ U.S. Department of the Interior, Fish and Wildlife Service
- ▶ University of Florida's Center for Landscape Conservation Planning, Institute of Food and Agricultural Sciences, and Range Cattle Research and Education Center



LANDSCAPE COORDINATOR CONTACT: Sheila McNamara | [smcnamara@cfrpc.org](mailto:smcnamara@cfrpc.org)